

prema „Kutu”

višestambene zgrade

općina pošta FINA

hrvatski
dom

hotel
„Tamaris”

gat

Kula Perasti

šira situacija



park

riva

Luka

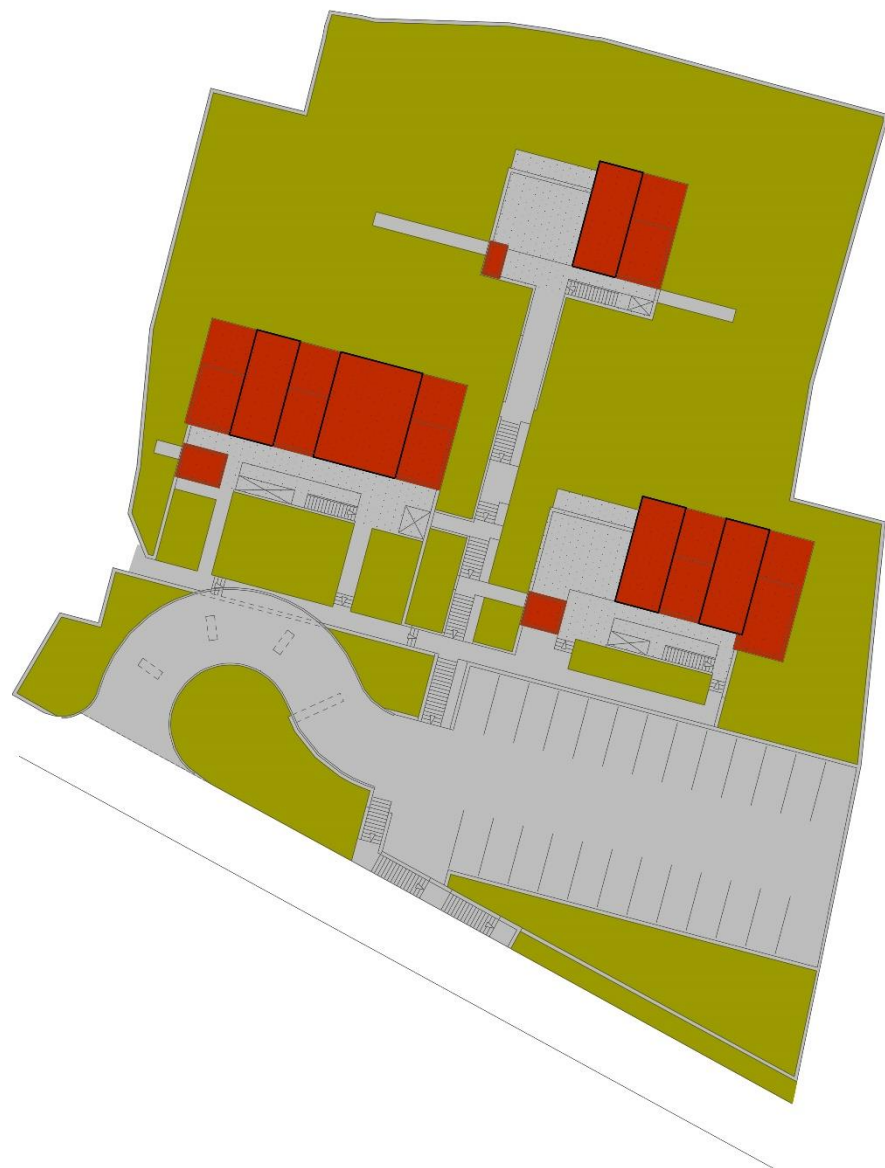
Kut

Put Lučko Brdo.

Zagrebačka ul.

Batarija

situacija



uža situacija

Put Lučko Brdo

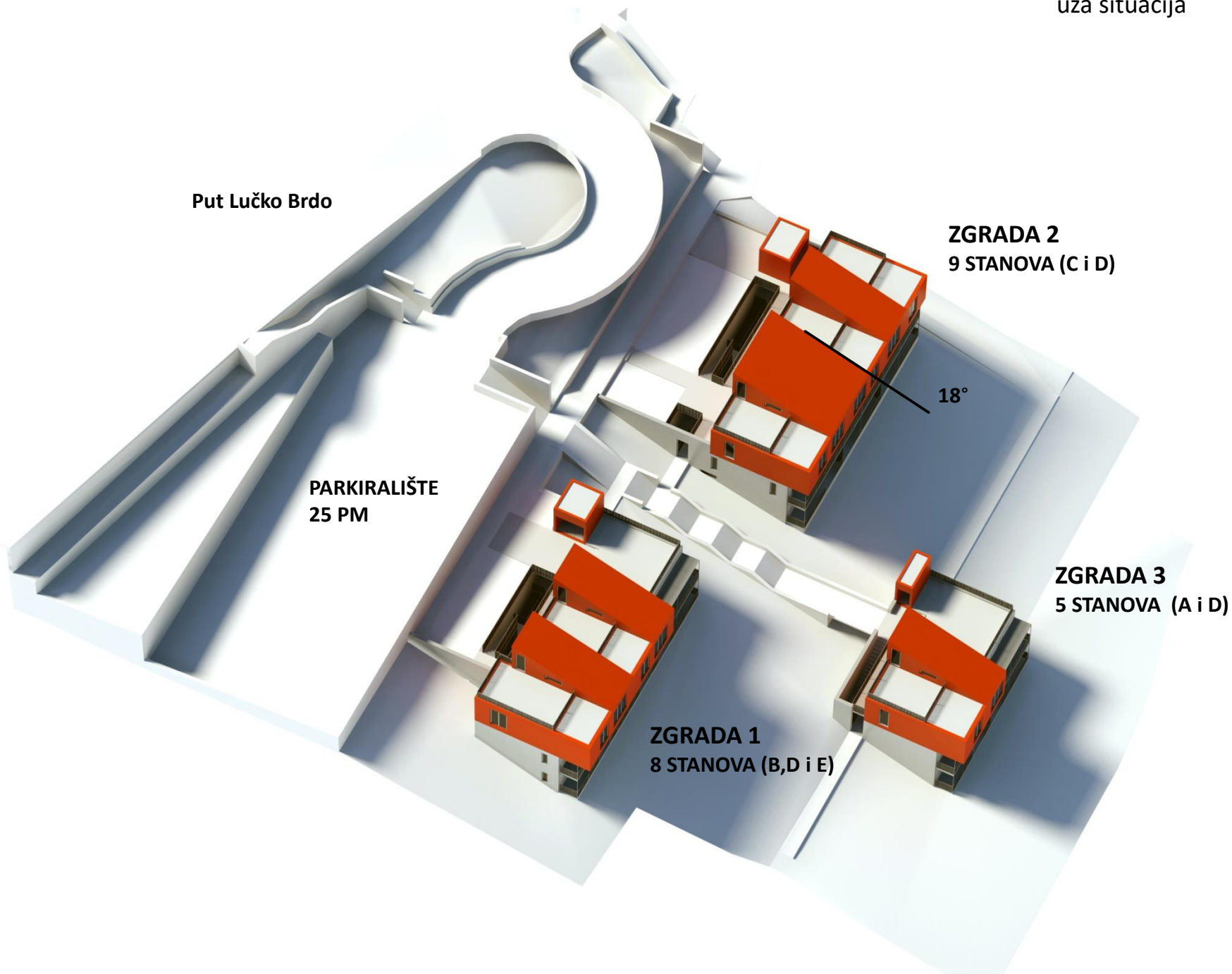
PARKIRALIŠTE
25 PM

ZGRADA 2
9 STANOVA (C i D)

18°

ZGRADA 3
5 STANOVA (A i D)

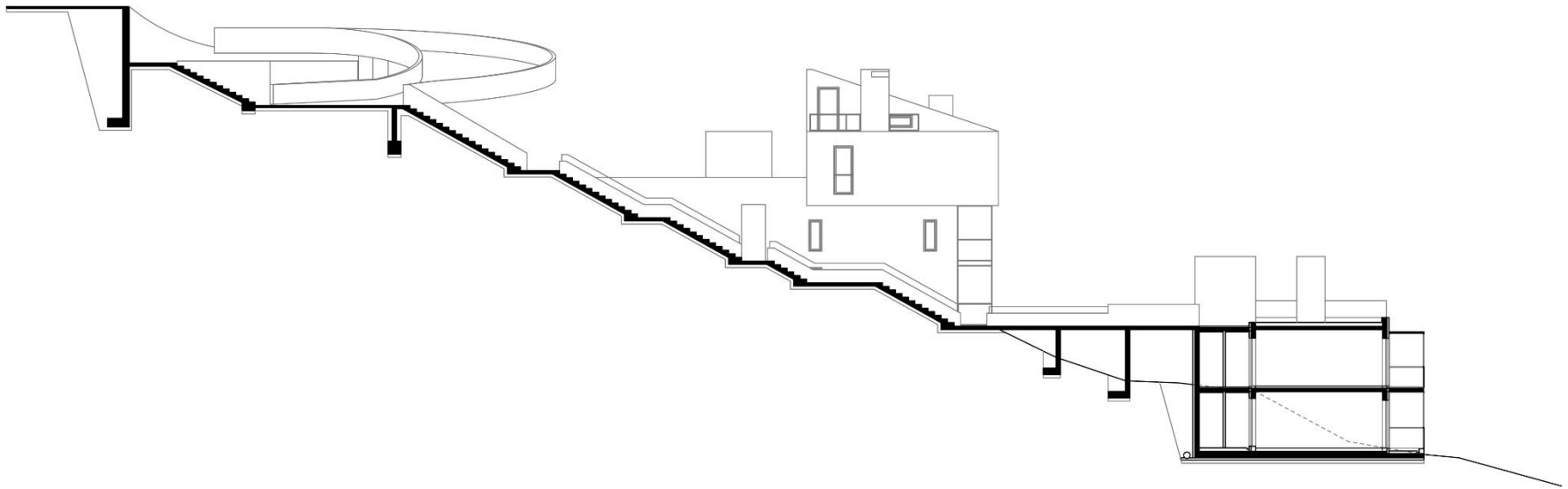
ZGRADA 1
8 STANOVA (B, D i E)







presjek - obuhvat



dijagonale, horizontalnost



postament i razvedeni volumen, dva dijela, gornji izvučen prema padini, boja

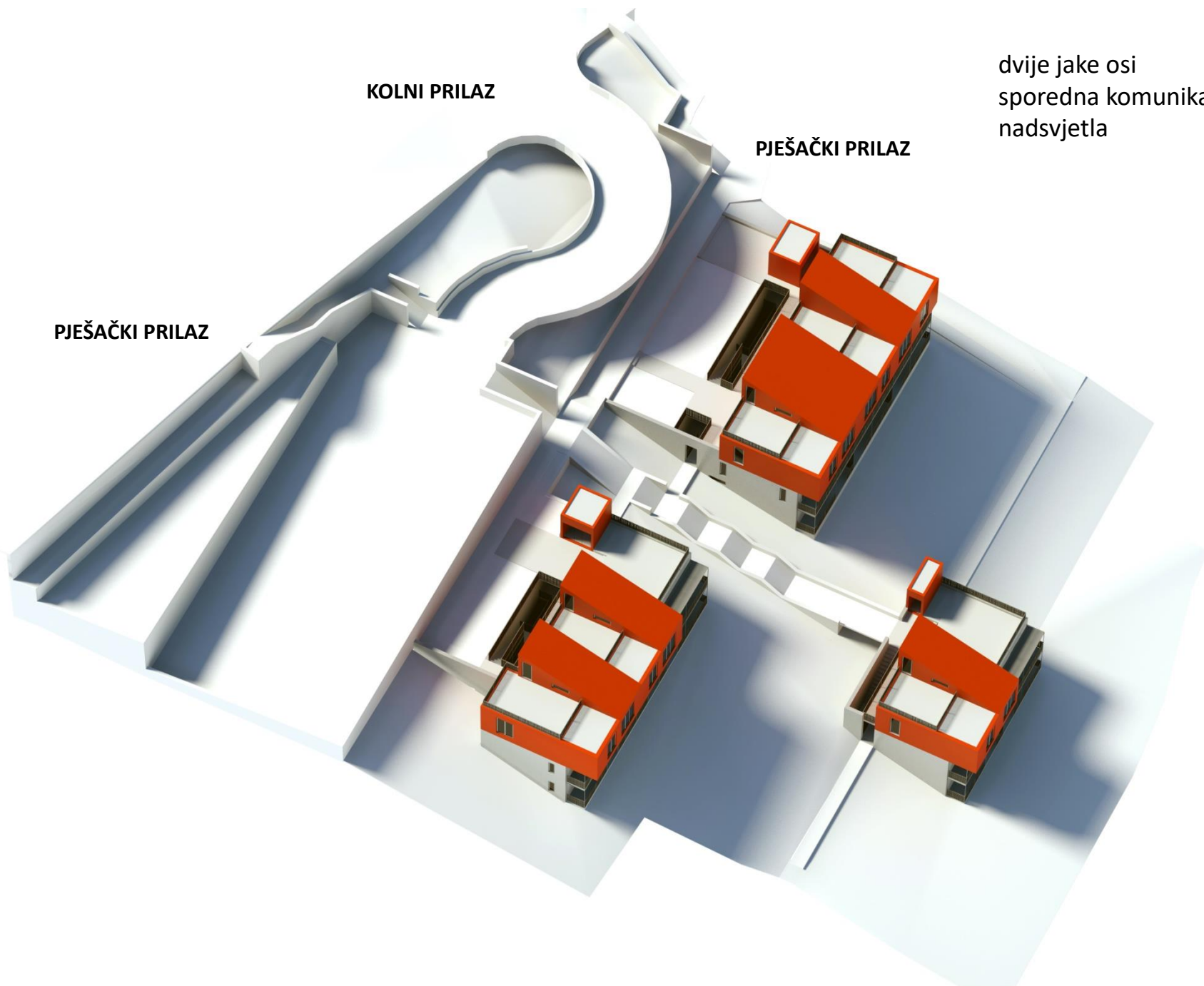


KOLNI PRILAZ

PJEŠAČKI PRILAZ

dvije jake osi
sporedna komunikacija
nadsvjetla

PJEŠAČKI PRILAZ



glavna os komunikacije sa rampama za torbe za namirnice



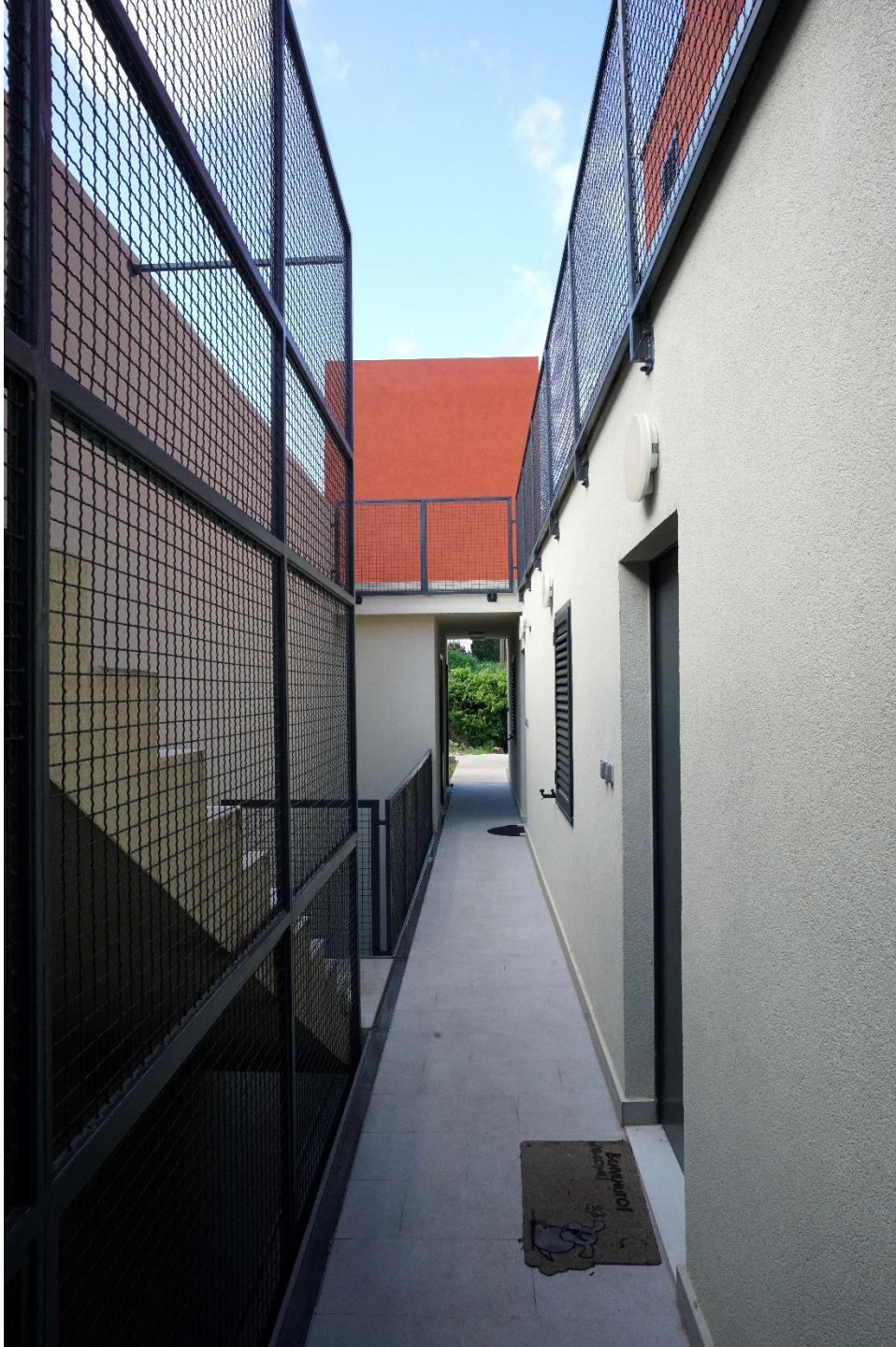
sporedna komunikacija kroz otvorena stubišta galerijskog tipa



stubište



stubište





pogled sa juga, privid manje katnosti, naglašeni vertikalitet kroz ritam krovova



pogled sa juga, privid manje katnosti, naglašeni vertikalitet, ritam krovova



moguće ih je sagledati samo izbliza, zbog nagiba terena





nadvožnjak iznad glavne pješačke osi naglašava pristup

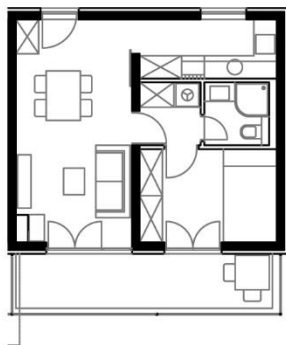


zajedničke terase otvaraju pogled sa platoa prema poluotoku Prilovo

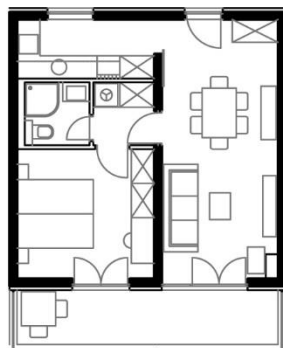




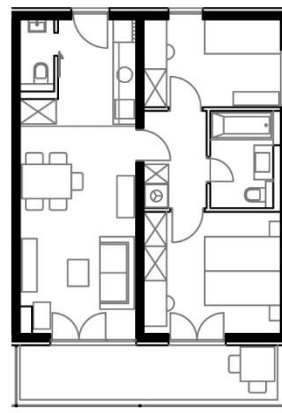
1.5S



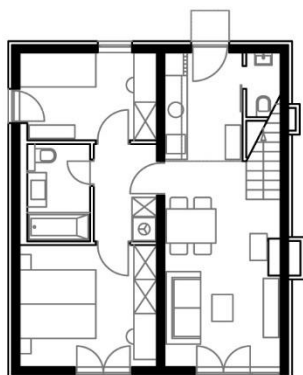
2S



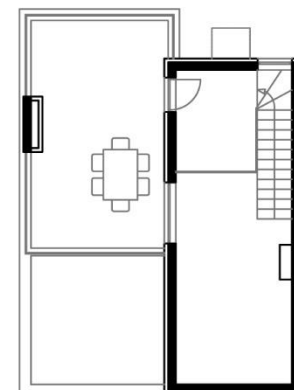
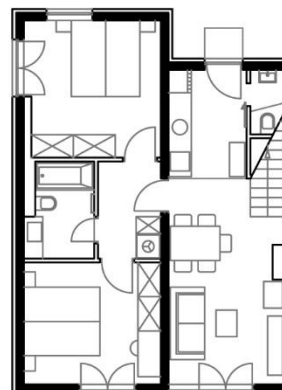
2.5S



2.5S - galerija



3S - galerija



pregled stanova po zgradama



PRIZEMLJE

pregled stanova po zgradama



PRVI KAT

pregled stanova po zgradama



DRUGI KAT

pregled stanova po zgradama



POTKROVLJE

