



## PLANNING in LATVIA

system of spatial development/planning and practice

Jonas Buechel  
Gunta Lukstina  
University of Latvia  
Urban Institute, Riga

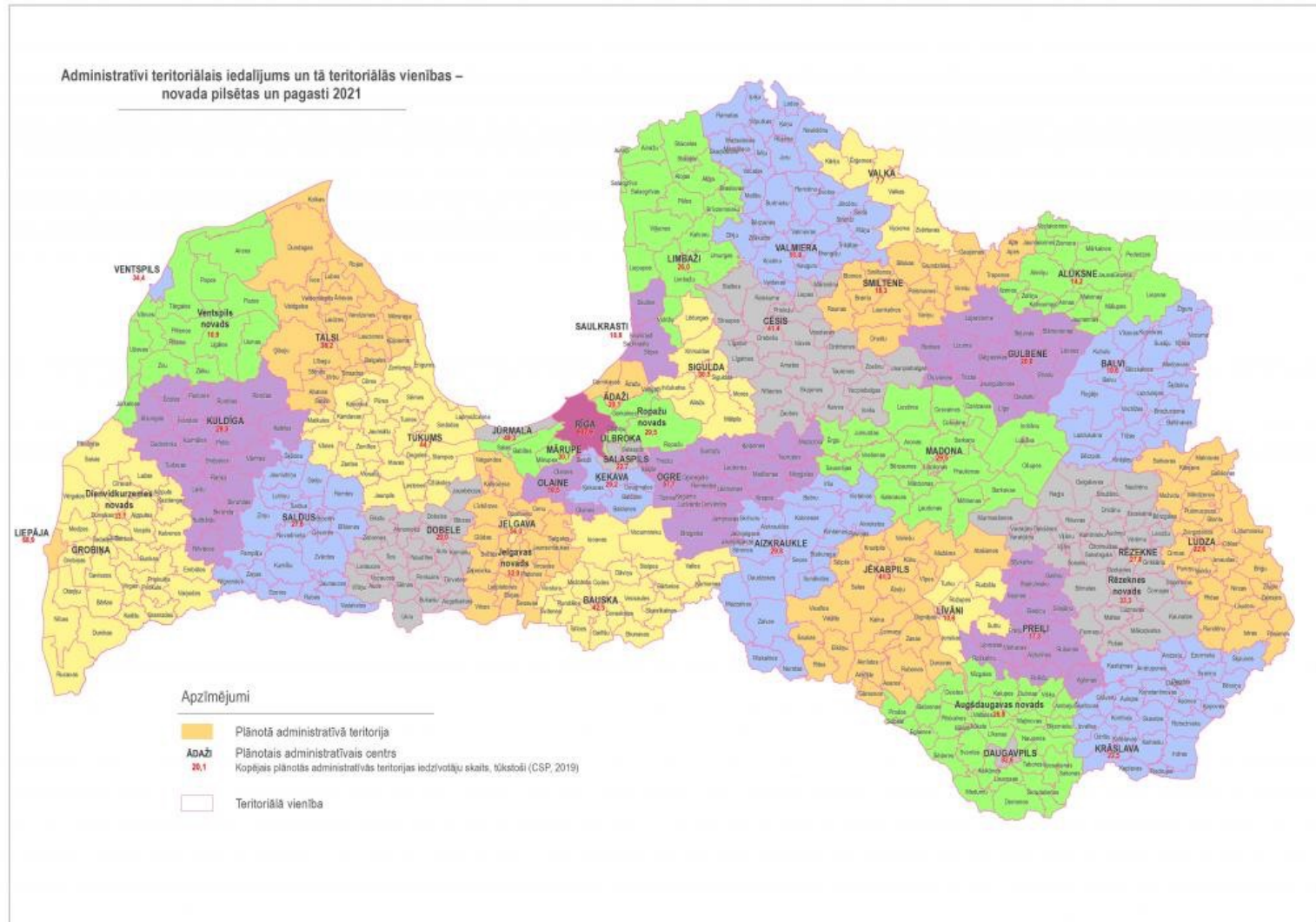
Webinar

**European Systems of Spatial Planning, 28.05.2021**

# The Planning Regions



# The new (and partly old) municipalities and Republic Cities = 119 -> 42



# Content

- Planning in Latvia from 90's
- Current planning system
- Planning documents and levels
- Planning information system TAPIS
- Public Participation, amending / changing the existing plans, financing
- Other planning tools ... Village / community planning

# Planning in Latvia 1994 - 2011 - ...

## 3 periods

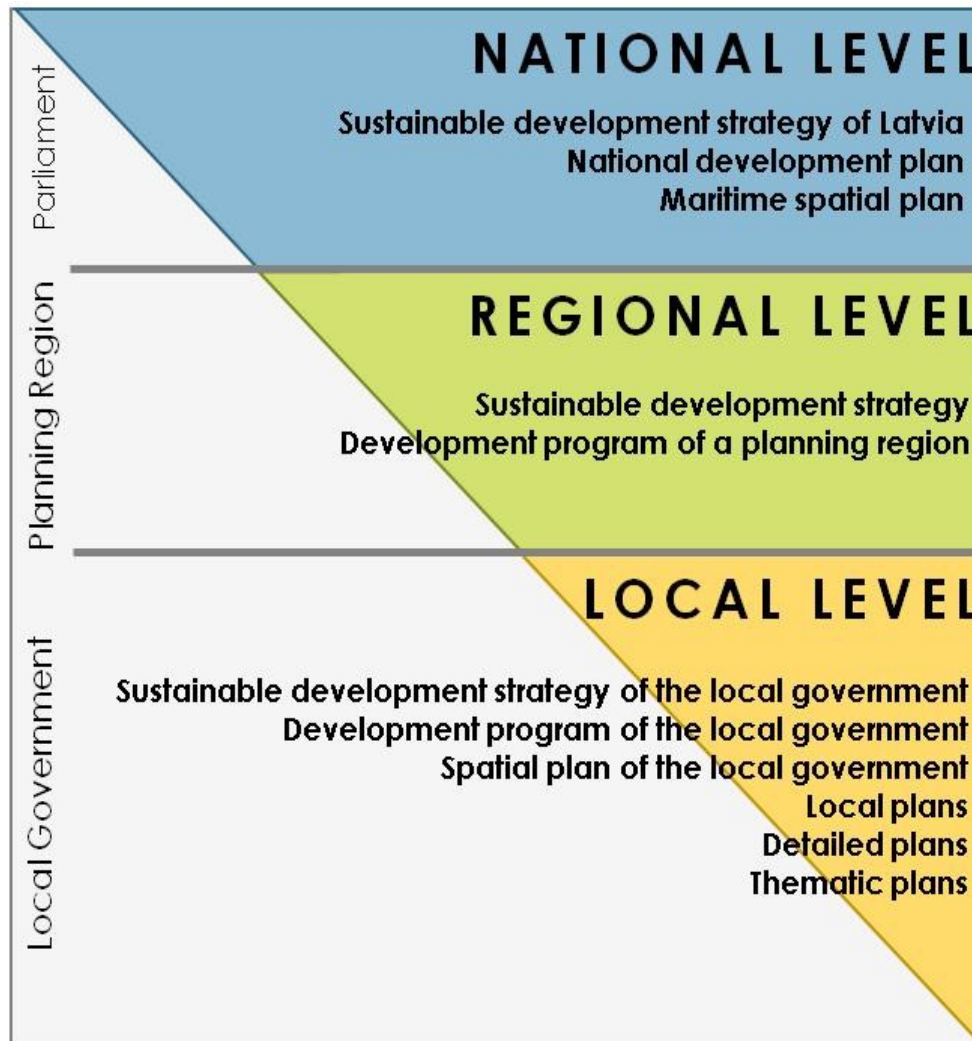
- Beginning 90th - 2003
  - “system” building, experience
  - strategic /spatial planning experience
  - pre-EU normative frame
- 2003 – 2011
  - land-use planning and elaboration of programmes (municipalities)
  - regional spatial planning (planning regions)
- 2011 – ...
  - integrated planning, spatial planning, community/village planning

# Planning in Latvia

- Planning system of Latvia - 3 planning levels
  - National (policies)
  - Regional (guiding)
  - Local (binding spatial plans)
- **Development Planning System Law (2008)**
- **Spatial Development Planning Law (2011)**
- Regulations of the Cabinet of Ministers
- ~ 60 legal acts with close relation to planning
- Normative system and practise

- **Development Planning System Law (2008)** - <https://likumi.lv/ta/en/id/175748-development-planning-system-law>
- The spatial planning system is defined by **Spatial Development Planning Law (2011)** defines
  - planning principles,
  - spatial development planning documents, their content
  - and Spatial Development Planning Information System - <https://likumi.lv/ta/en/id/238807-spatial-development-planning-law>

# Current planning system in Latvia



**Planning  
Legislation:**

**Development Planning  
System Law (2008)**

**Spatial Development  
Planning Law (2011)**

Regional Development  
Law (2002)

Environment Laws and  
Regulations



# Hierarchy of the Planning Documents

- In drawing up development planning documents, they shall be mutually coordinated
- The hierarchically highest
  - long-term development planning document - **Sustainable Development Strategy of Latvia-2030**
    - All subordinate spatial planning documents and policy guidelines should be consistent with the policy goals in Latvia-2030 strategy
  - medium-term development planning document - **National Development Plan**

These two highest strategic development planning documents are adopted by the national parliament Saeima – accordingly they have the status of legal act

# Hierarchy of the Planning Documents

- **The medium-term development planning documents** are hierarchically subordinated to the long-term development planning documents
- **The short-term development planning documents** are hierarchically subordinated to the medium-term development planning documents
- **The regional level development planning documents** are hierarchically subordinated to the national level development planning documents
- **The local level development planning documents** are hierarchically subordinated to the regional and national level development planning documents

# National level

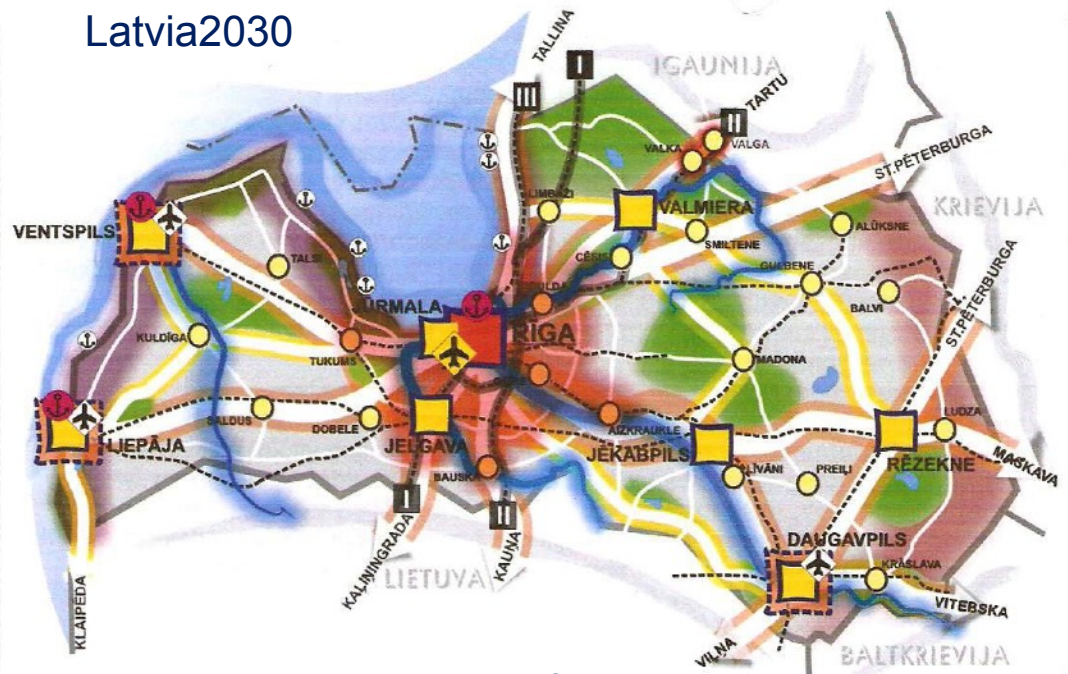
Sustainable Development Strategy Latvia2030

National Development Plan

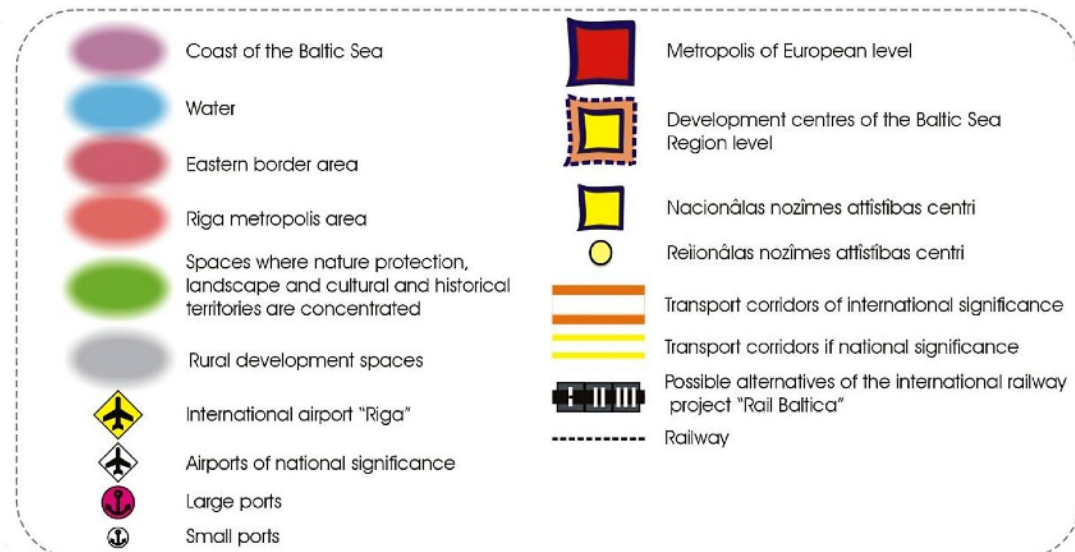
Maritime spatial plan

National thematic plans

Latvia2030

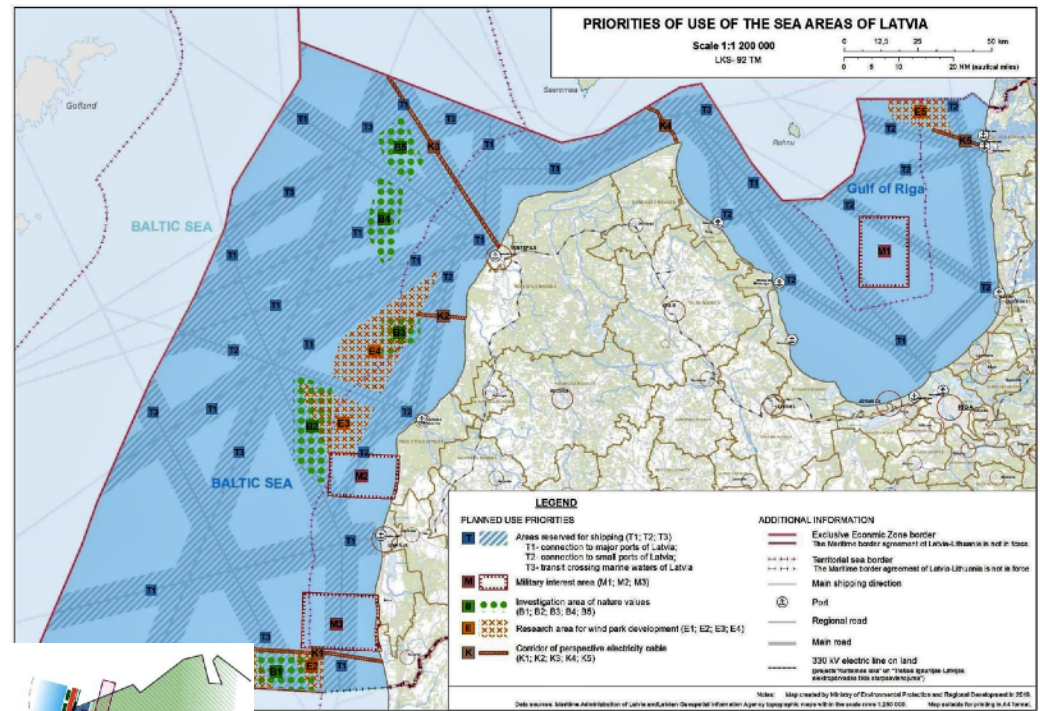


Future spatial structure of Latvia



# National level

## Coastal development thematic plan



Coastal municipalities' cooperation areas for development of thematically coherent tourism offer

- Vidzeme Coastal zone of Gulf of Riga
- Kurzeme Coastal zone of Gulf of Riga
- Northern Kurzeme Coastal zone of Baltic Sea
- Southern Kurzeme Coastal zone of Baltic Sea

Coastal municipalities' cooperation areas for development of specific tourism offer

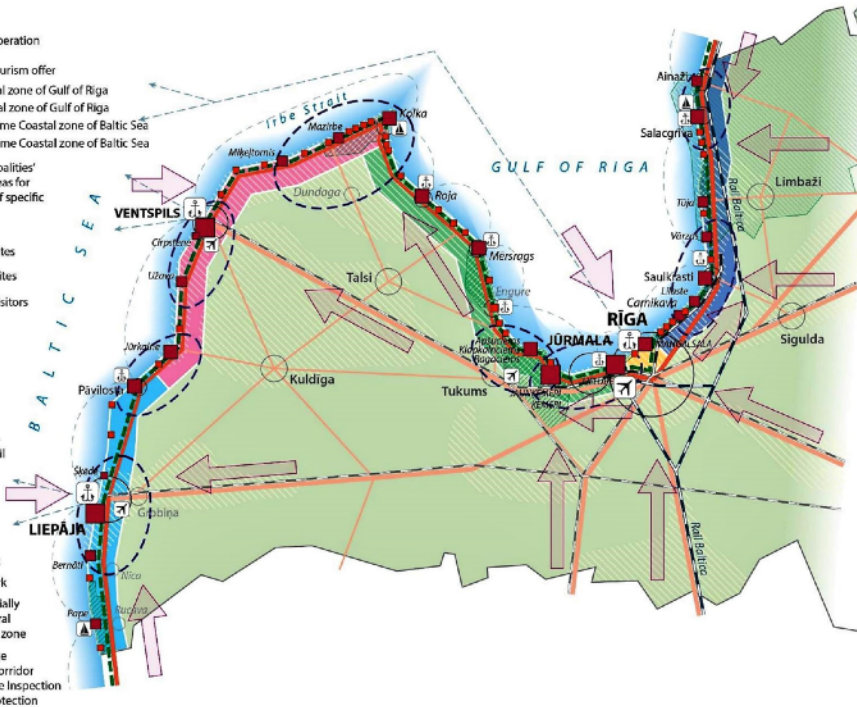
- Priority development sites
- Development sites
- Main flows of visitors to the coast

- Airports
- Harbours
- Marinas

- Development of EuroVelo 13 – Iron Curtain Trail
- Railways
- Railway Rail Baltica
- Roads

- Ferries network
- Marinas network

- Important specially protected natural areas in coastal zone
- Cultural heritage development corridor defined by State Inspection for Heritage Protection



space of Latvian MSP 2030

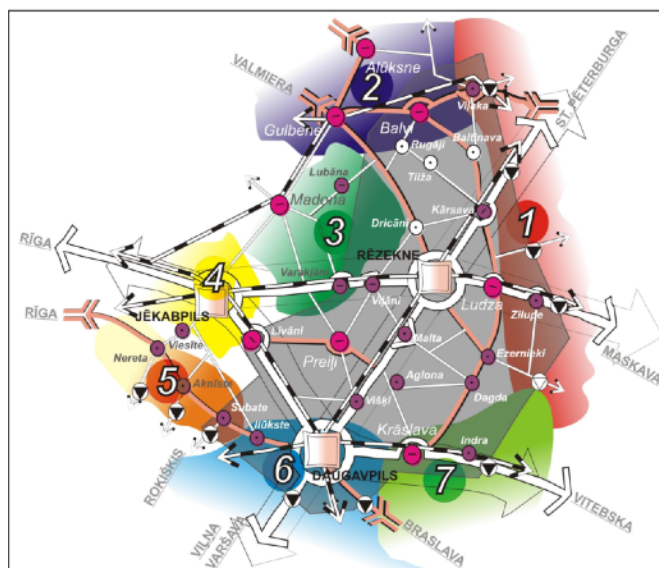


## Maritime spatial plan

Figure 3. Cooperation territories for common tourism offer development and coastal public infrastructure development

# Regional level

- Sustainable Development Strategies spatial perspectives
- Development Programmes
- Regional thematic plans



# Local level

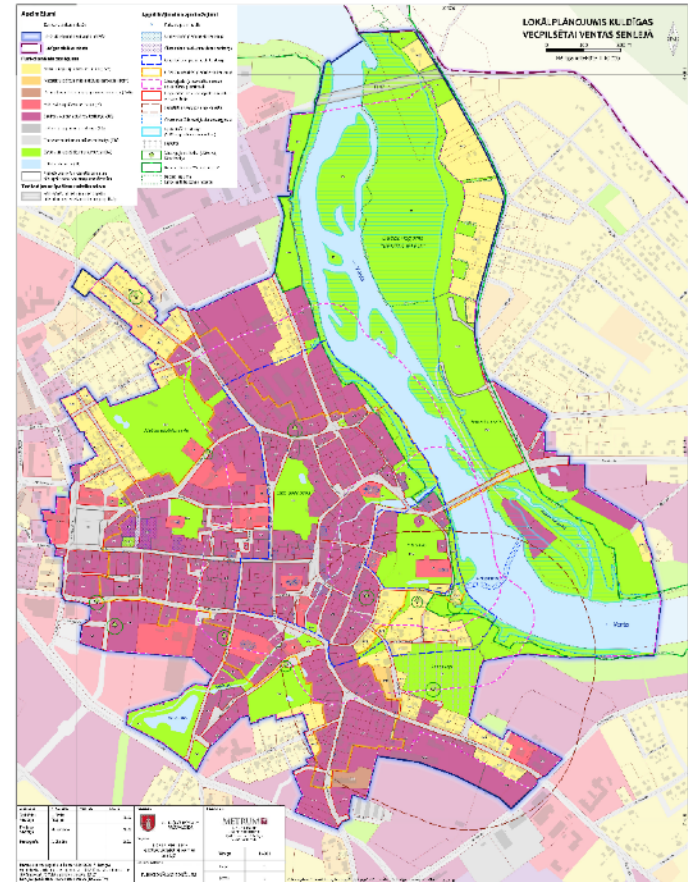
- Sustainable Development Strategies incl. spatial perspectives (obligatory)**
- Development Programmes (obligatory)**
- Spatial plans (called in LV territorial plan = physical, land-use plan) (obligatory)**
- Local plans (not obligatory)
- Detailed plans (not obligatory)
- Thematic plans (not obligatory)



Kadrtīģu plānā: atzīmētā cietā dzīvokļu (pārveidota zemes) projekta projekts

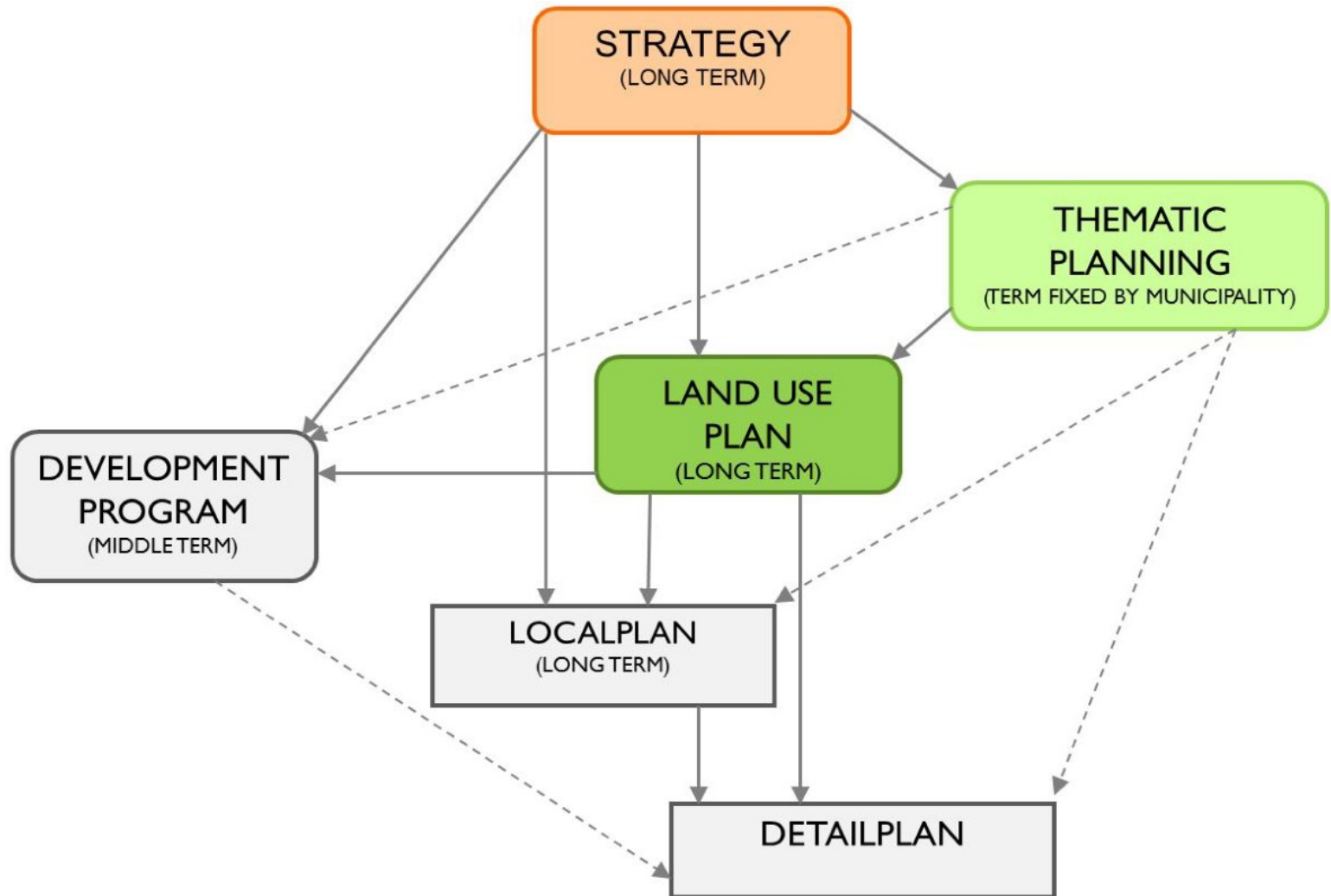
1. cietā individuālo dzīvokļu (pārveidota zemes) izstrādes vietas analīze

Nr.	Individuālo dzīvokļu (pārveidota zemes) robežu projekta projekta fragmenti	Territorijas funkcionālās zonējuma fragmenti no katrtīģu plāna teritorijas plānojumā	Aizsargātās un citu vietas	Priekšlikums
1.				<ul style="list-style-type: none"> <li>Izstrādāt teritoriju, kas vēsturiski nav bijusi funkcionālās plānošanas zonē un apstāšanās zonē (pārveidota zemes gabalu daļas, gar šīs vietas un plānotā dzīvokļu teritorijas (kas savienos Tehelkas ielu ar Kuršānu ielu)).</li> </ul>
2.				<ul style="list-style-type: none"> <li>Izstrādāt vietas plānošanu Est-bāru parka, L1, ietuvdarbne (pārveidota zemes) (kadrtīģu apr. 6201: 039-0130) Fab Grants ielā.</li> </ul>
3.				<ul style="list-style-type: none"> <li>Izstrādāt funkcionālās plānošanas zonu 33 (kadrtīģu apr. 6202:0060132) un Ventspils ielā 40 (kadrtīģu apr. 6202:0060229).</li> </ul>





# Links among municipal planning documents



# Sustainable development strategy

The **sustainable development strategy** of a local government - long-term spatial development planning document, laying down

- the vision of the local government long-term development strategic objectives

- development priorities

- the spatial development perspective

in written and graphic form

## **In spatial development perspective**

- the guidelines for spatial development

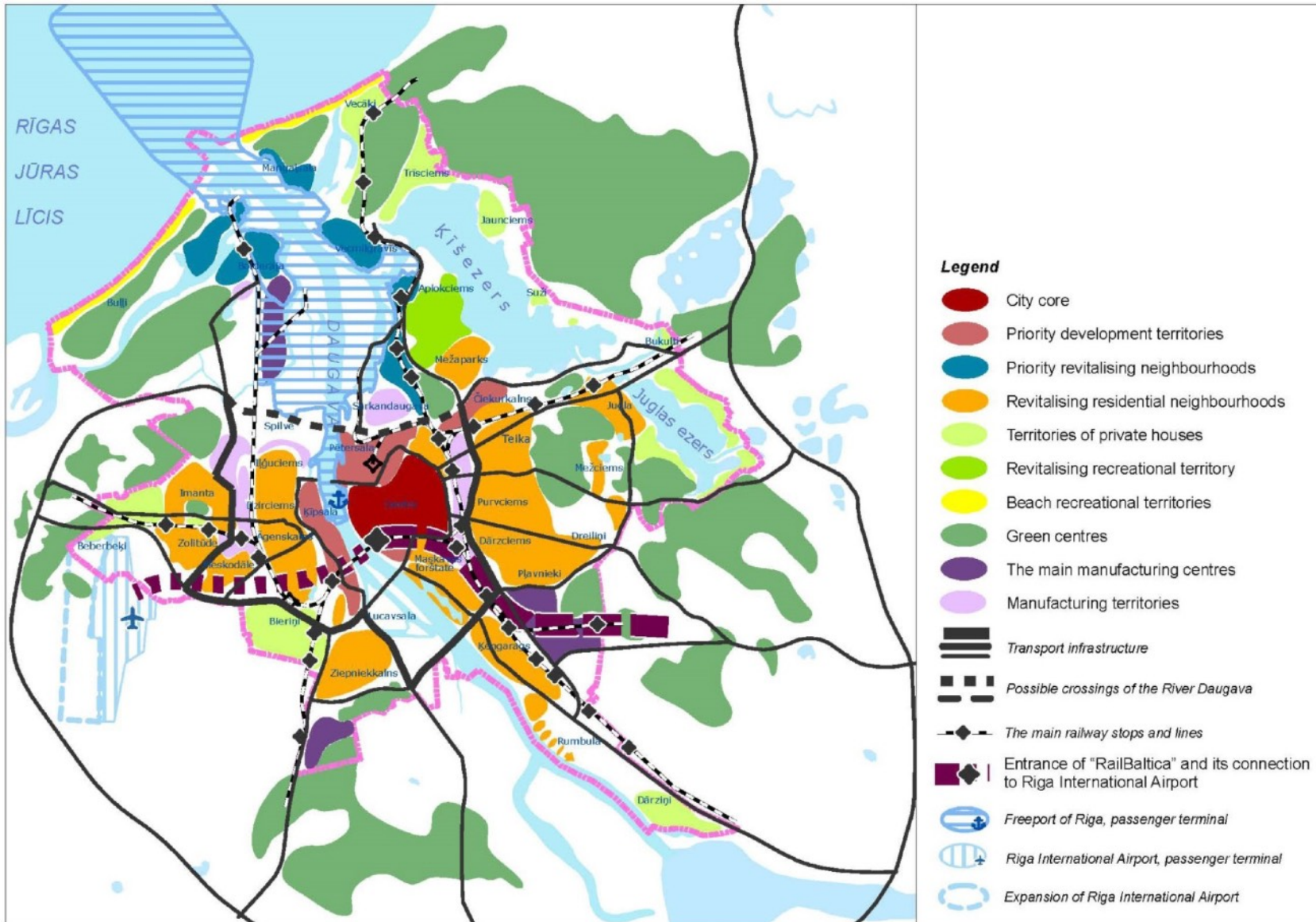
- the most significant spatial structures: settlement structure, nature areas, main transport corridors, technical infrastructure

- spatial development priorities

and preferable long-term changes of the local government displayed schematically



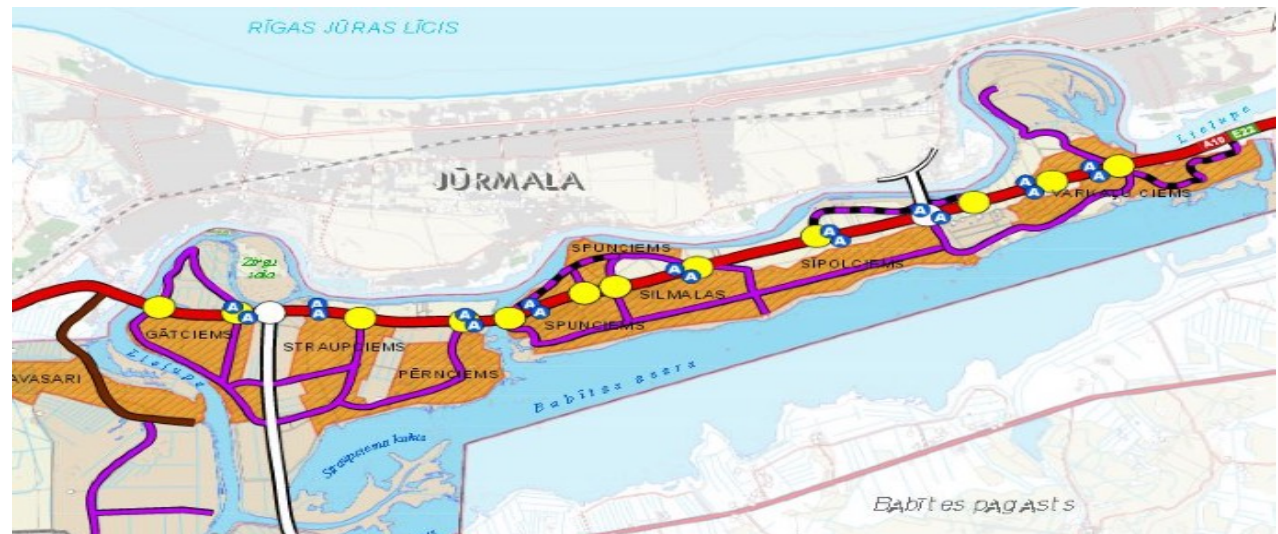
# Sustainable Development Strategy Riga 2030 – spatial development perspective





# Scale of Spatial plan (territorial plan, physical, land-use)

- Scale for the spatial plan, functional zoning map  
M 1:10.000
- Different schemes, e.g. transportation schemes – different scales (usually in smaller scales)



## **New tools - Spatial development planning information system / new standards**

- Spatial development planning information system (TAPIS) - introduced by the Ministry of Environment Protection and Regional Development in 2015
- Regions, municipalities can upload and **keep all planning documents** and **produce spatial plans** (in one standard for graphics, for text) **on a common digital platform**,
  - making documents available for institutions, planners and citizens in one place online – **TAPIS**



Vides aizsardzības un  
reģionālās attīstības  
ministrija

# Spatial Development Planning Information System TAPIS

## ALL PLANNING DOCUMENTS AT ONE PLACE Divided by a public section and an expert section

ministrija

Meklēt kartē adresi, teritoriju vai zemes vienību

1 : 1,000,000

Kartes logs tavā mājaslapā

Teritorijas attīstības plānošanas dokumenti

- Uzsākta izstrāde
- Publiskā apspriešana
- Spēkā esošs
- D Detālpārplānojums
- L Lokālpārplānojums

Autori: © TAPIS, VZD, LĢIA, DAP

Biežāk uzdotie jautājumi    Atlasītie plānošanas dokumenti (0) / visi kartes slāņi    Kartes apzīmējumi

### Plānošanas dokumenti

Ropažu novads

Meklēšana pēc dokumenta izstrādātāja

Meklēšana pēc dokumenta statusa

▲ Vienkāršā meklēšana

59 dokumenti

- Ropažu novada teritorijas plānojums 2020.-203...** APSPRIEŠANĀ
- Lokālpārplānojums Eiropas standarta platuma pu...** IZSTRĀDE
- Ropažu novada teritorijas plānojums 2006. - 20...** SPĒKĀ
- Lokālpārplānojums nekustamam īpašumam "Pūpol...** SPĒKĀ
- Egles Lokālpārplānojums 2016 (1.0 redakcija)** SPĒKĀ
- Lokālpārplānojums zemesgabalam "Lielkangari" (...)** SPĒKĀ

**Vēlies sekot līdzi plānošanas procesam?**  
Kāpēc tas būtu noderīgi un kā pieteikties paziņojumu saņemšanai?  
**Autentificēties un pieteikties paziņojumu saņemšanai!**

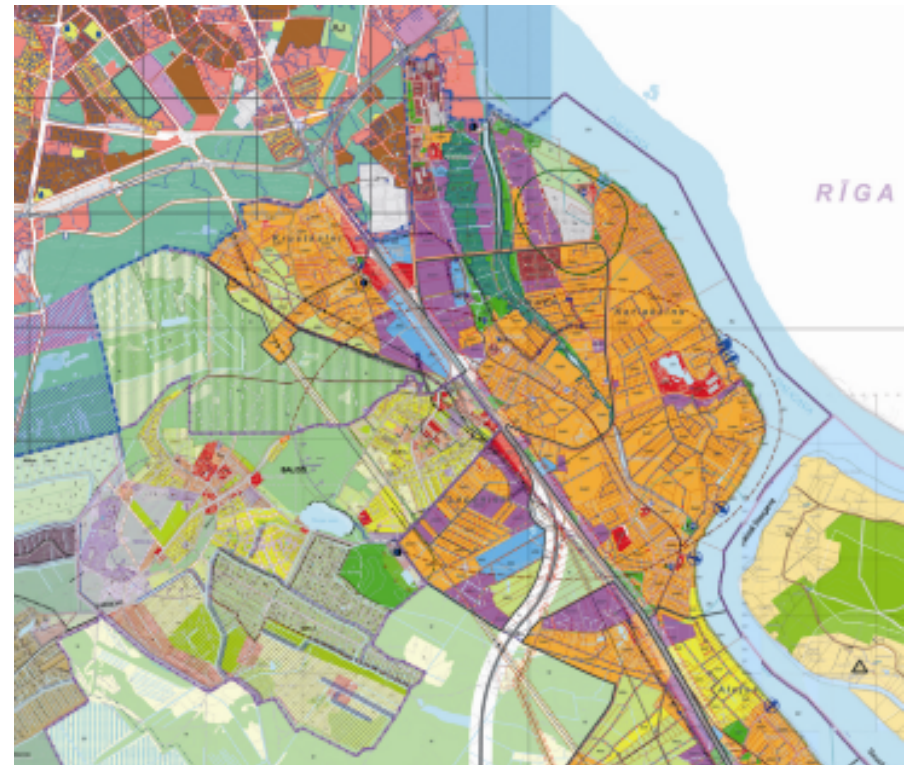
**Kā ērtāk iegūt informāciju no plānošanas dokumentiem?**  
Ģenerēt bezmaksas informatīvu izziņu par zemes vienības plānoto izmantošanu saskaņā ar plānošanas dokumentiem

# Standards of designing spatial plans

for spatial plan, local/detailed plans - physical, land use plans

Classification of land use types: division, determination of functional zones, their graphical representation is determined by the Cabinet of Ministers Regulations

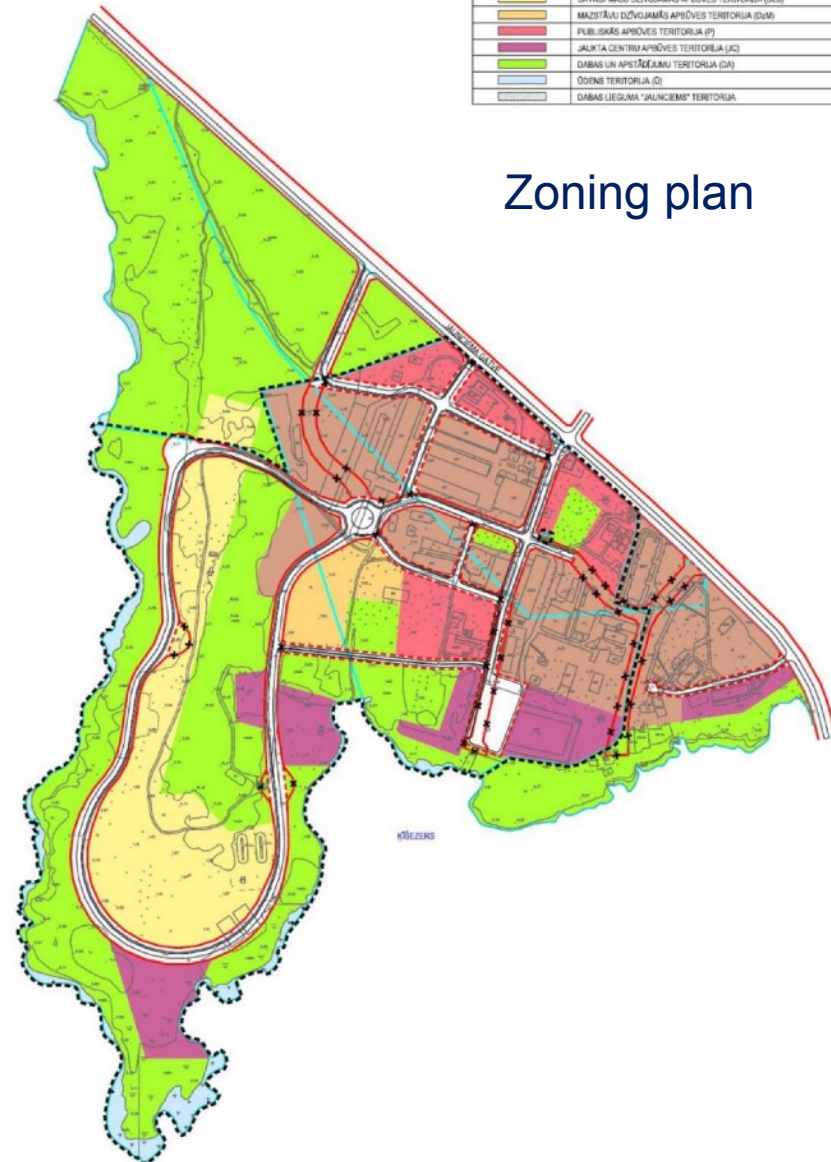
- private house building territory (DzS)
- low-storey residential building territory (DzM)
- multi-storey residential building territory (DzD)
- mixed centre building territory (JC)
- public building territory (P)
- industrial building territory (R)
- transport infrastructure territory (TR)
- technical building territory (TA)
- nature and greenery territory (DA)
- forest territory (M)
- water territory (Ū)



# Local plan

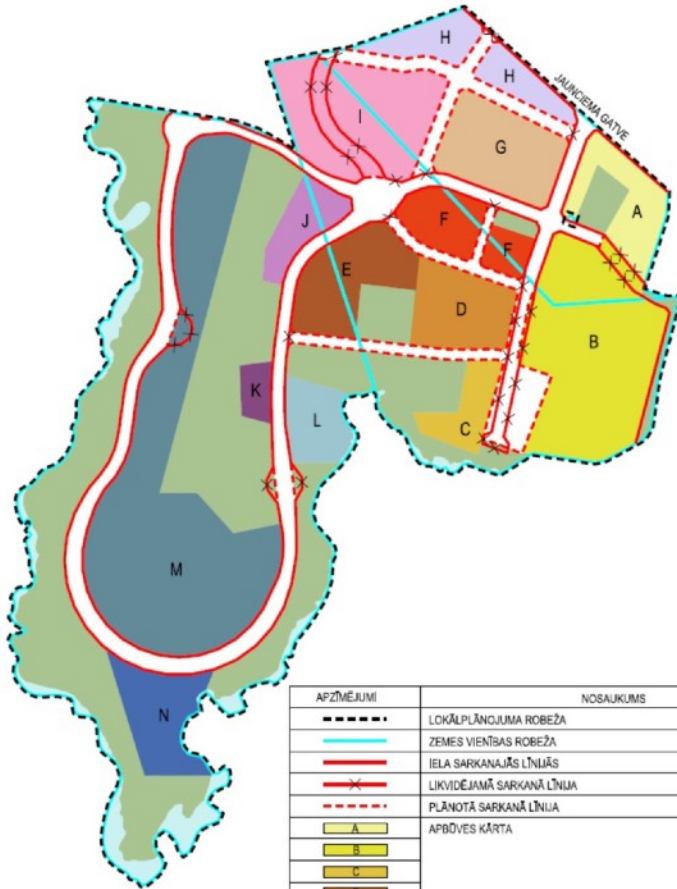
- The local plan is developed by a municipality for a part of its administrative territory (part of a town, village or rural area) in order to
  - accomplish a planning task
  - or to detail a spatial plan
  - or amend a spatial plan, insofar as the local plan is not in contradiction with the sustainable development strategy of the local government

APŪŠĀRĀBE	NOSAIKUMS
---	LOKĀLPĀRĀRĀBE ROBEŽA
---	ZEMES VIENĪBAS ROBEŽA
---	ESOŠĀ IELAS SAVIŅĀMĀ LĪNĪJA
---	PROJEKTIETĀ SAVIŅĀMĀ LĪNĪJA
---	LIKUMDARĪTĀ SAVIŅĀMĀ LĪNĪJA
---	PĀRĪKOTĀ BRĪVĀKĀRĪBĒ, IETĪVĒ
---	DAUDZDZĪVĪBŪ DZĪVĪAMĀS APŠŪVES TERITORĪJA (Dd)
---	SAVRĪPĀMĀJU DZĪVĪAMĀS APŠŪVES TERITORĪJA (Dsv)
---	MĀZSTĀVU DZĪVĪAMĀS APŠŪVES TERITORĪJA (Dm)
---	PUBLISKĀS APŠŪVES TERITORĪJA (P)
---	JAUKTA CENTRU APŠŪVES TERITORĪJA (Jc)
---	DABAS UN APSTĀDĀJUMU TERITORĪJA (Dn)
---	ĒDENS TERITORĪJA (Ē)
---	DABAS LĒGUMA "JAUNCIEMI" TERITORĪJA



# Local plan (Suži example, Riga)

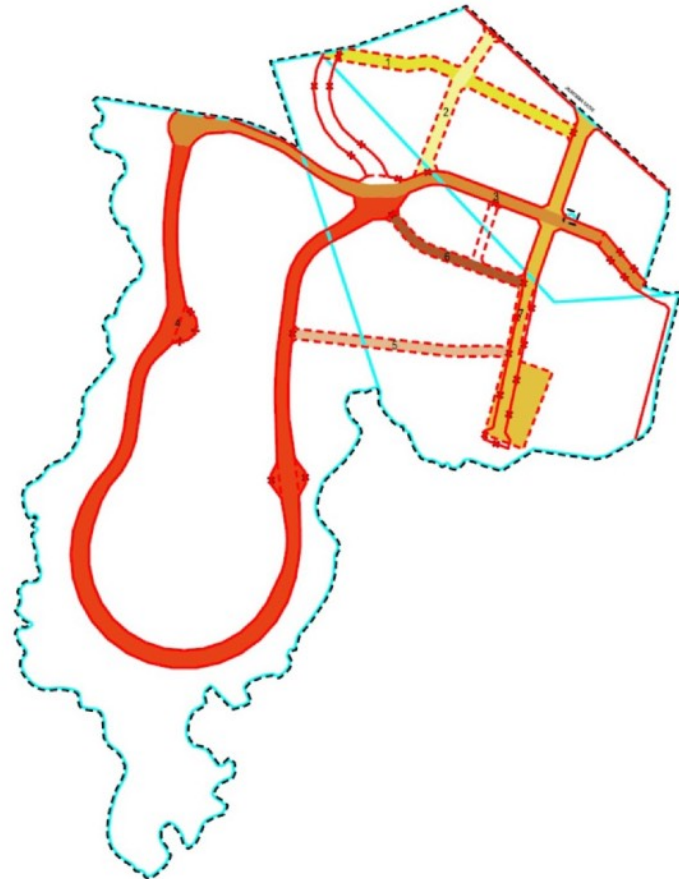
## APBŪVES KĀRTAS



APZĪMĒJUMI	NOSAUKUMS
---	LOKĀLPLĀNOJUMA ROBEŽA
---	ZEMES VIENĪBAS ROBEŽA
---	IELA SARKANĀJĀS LĪNIJĀS
---	LIKVIDĒJAMĀ SARKANĀ LĪNIJA
---	PLĀNOTĀ SARKANĀ LĪNIJA
A	APBŪVES KĀRTA
b	
c	
d	
e	
f	
g	
h	
i	
j	
k	
l	
m	
n	
	APSTĀDĪJUMU TERITORĪJA
	ŪDENS

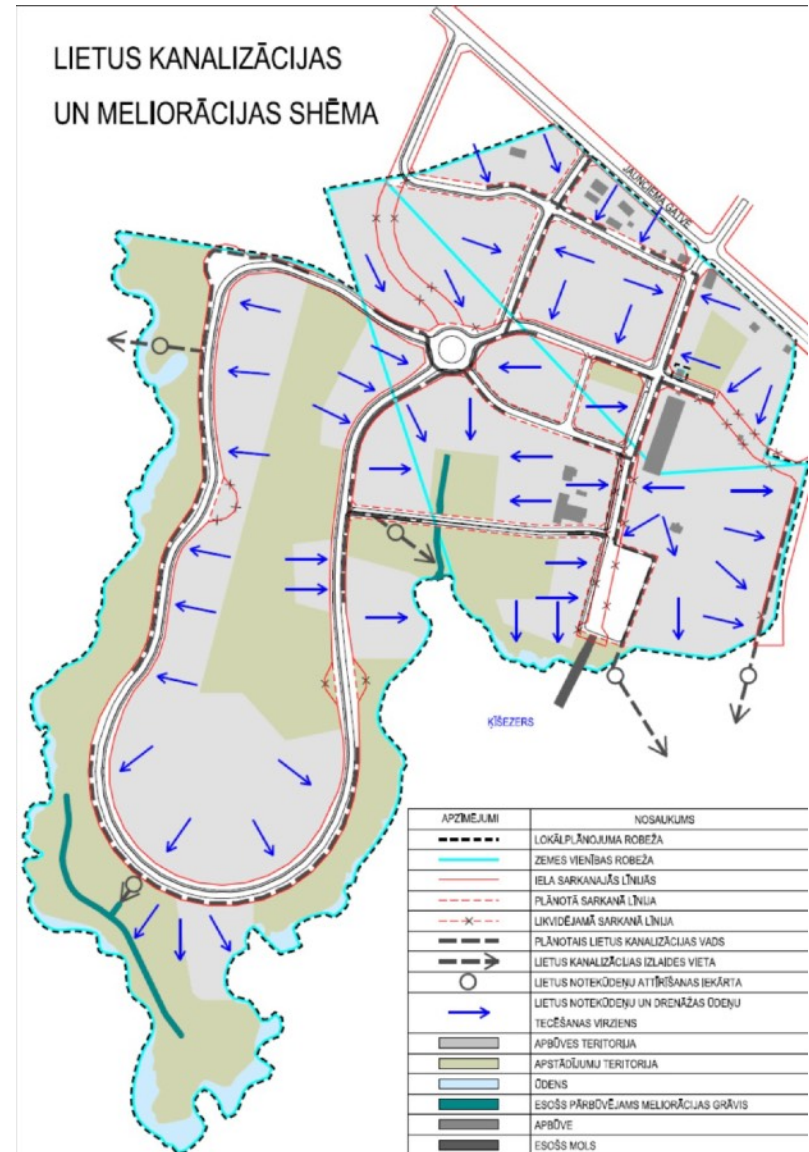
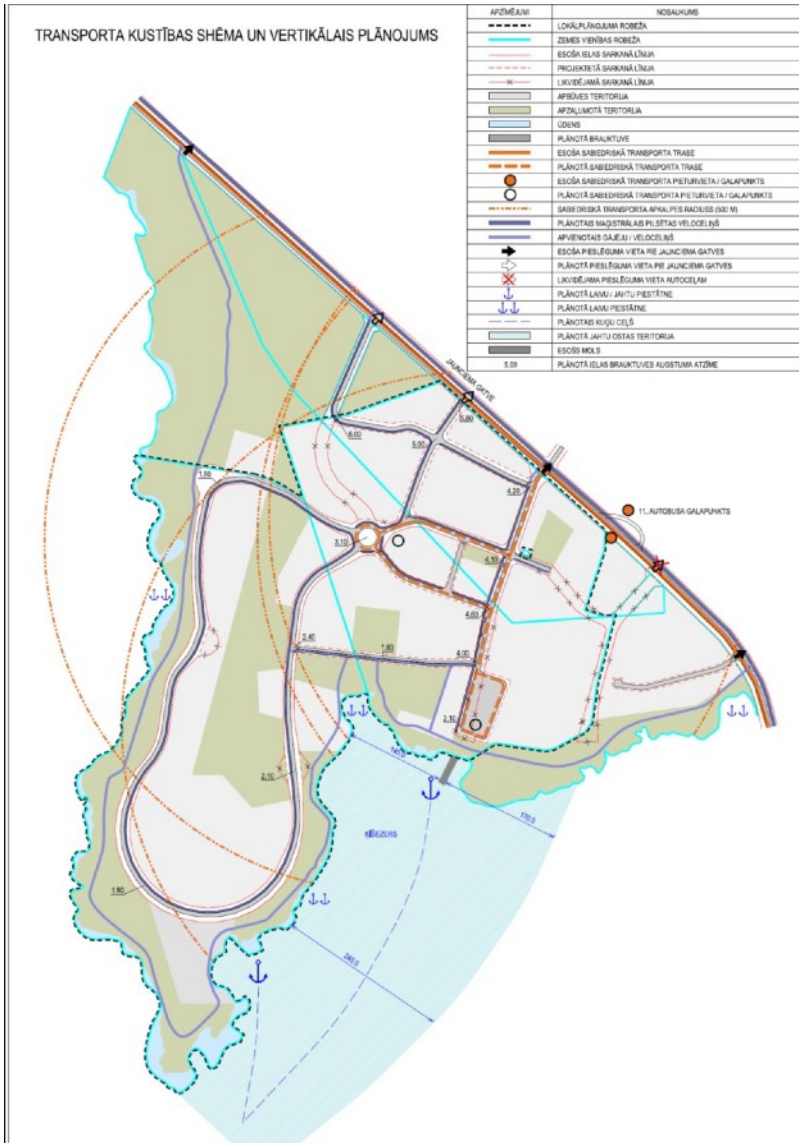
## IELU SADALĪJUMS

APZĪMĒJUMI	NOSAUKUMS
---	LOKĀLPLĀNOJUMA ROBEŽA
---	ZEMES VIENĪBAS ROBEŽA
---	IELA SARKANĀJĀS LĪNIJĀS
---	PLĀNOTĀ SARKANĀ LĪNIJA
---	LIKVIDĒJAMĀ SARKANĀ LĪNIJA
1	PLĀNOTĀ IELA
2	
3	
4	
5	
6	
7	





# Local plan (Suži example, Riga)



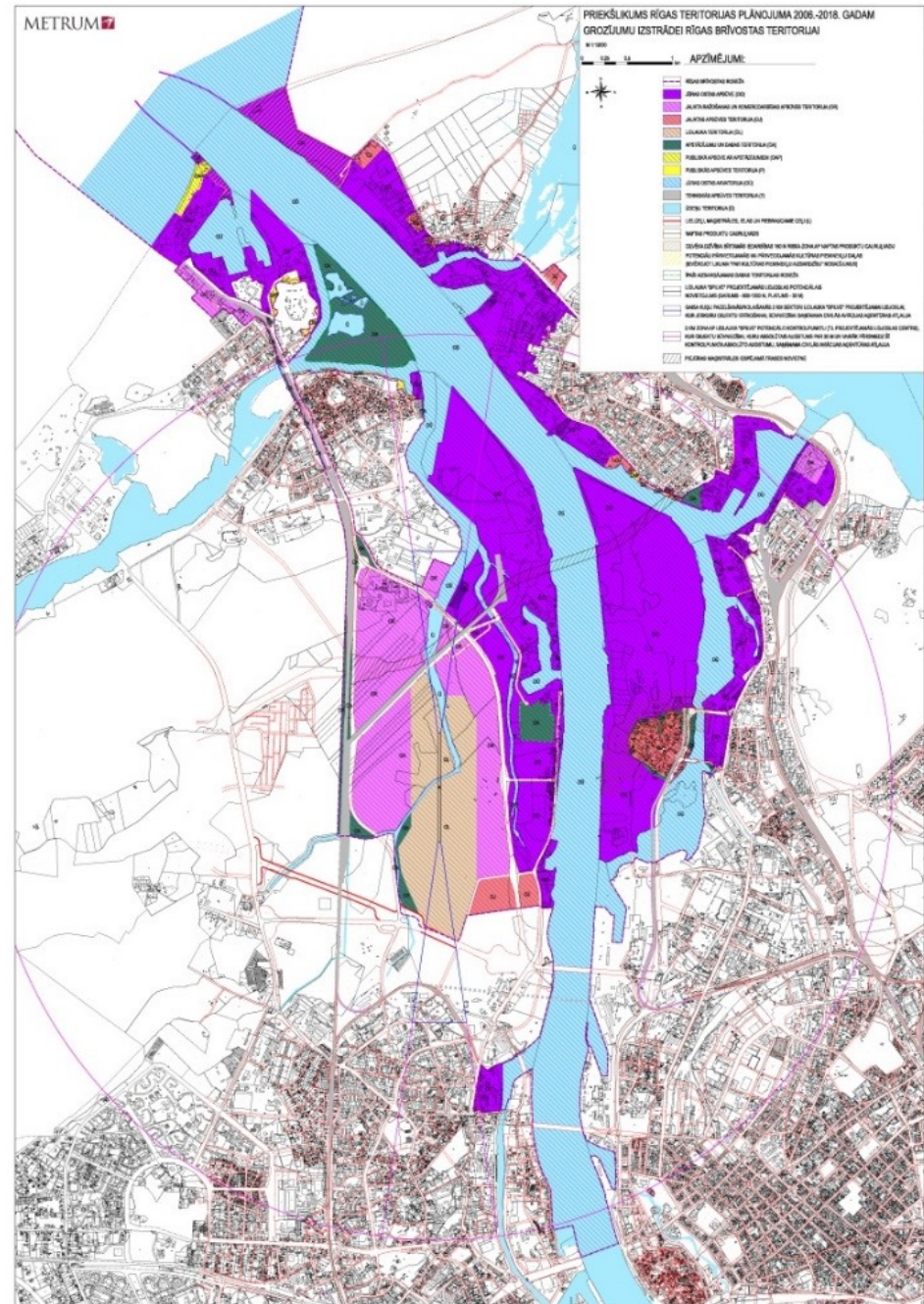
# Detailed plan

- A detailed plan of a part of local government territory
  - to detail a spatial plan, to specify the requirements for the use of specific land units and building parameters, as well as to adjust the boundaries of land units and restrictions



# Detailed plan

- A detailed plan may be prepared if the local government spatial plan does not cover the spatial utilisation and building conditions of specific land areas, but may not amend the spatial plan or local plan functional zoning
- Scale M 1 : 500



# Public Participation - official

- **Spatial development is planned through public participation** - during the public participation, the interests of private individuals and public interests are balanced with the sustainable spatial development
- The authority has a duty to organise public participation not less than 4 weeks
- **No obligation for collaborations in the elaboration period. The draft will only be „liked“ or „disliked“ ... and ...**
- In order to ensure a public discussion of a spatial plan, the authority has to **consult the public** before the actual decision-making process.
  - publish information on the website regarding developing spatial plan and amendments thereto, the procedures for, location and time periods of the public discussion, the place and time for getting acquainted with the particular spatial plan and amendments thereto, and the procedures for submitting written proposals and opinions

# Public Participation - official

- Everyone has the right
  - to become acquainted with the spatial development planning documents which handed over for public discussion
  - to participate in the public discussion
  - to express and defend his or her opinion and submit written proposals within the specified time period
- The authorities have a duty, during the development of spatial development planning documents,
  - to evaluate, in a balanced way, the proposals expressed and substantiate their decisions, as well as to notify these decisions to the public and submitters of proposals regarding the decisions

## Public participation using Information System TAPIS

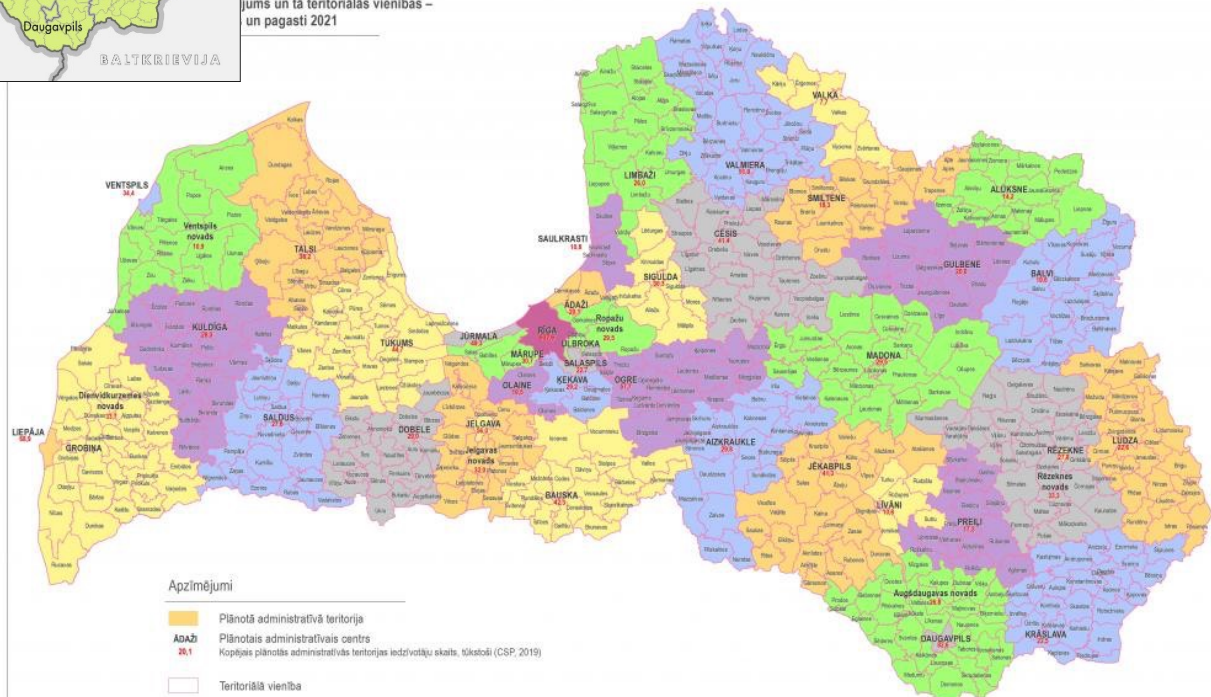
- In the public part of Spatial Development Planning Information System TAPIS, residents are able to submit proposals about spatial development planning document, when it is the subject of a public consultation
- These proposals are automatically sent to the central module of TAPIS,  
where the local government and developer of spatial development planning document process them and provide an answer, which is then sent to the e-mail, indicated by the resident

# Correlation of physical and strategic planning



5 planning regions

Plānots un tā teritoriālās vienības – un pagasti 2021



Local governments after reform 2021

# Correlation of physical and strategic planning

- Strategic planning – stronger at national and regional level
- **Second elaboration period of Sustainable development strategies incl. spatial perspectives have started in 2020/2021 at the local level due to administrative territorial reform**
- Solutions of Spatial plan (territorial plan = physical, land - use plan) must correspond to the long term sustainable development strategy, its spatial perspective



## The procedures for amending / changing the existing plans

- Changes in the functional zoning specified in a spatial plan or in the regulations regarding land use and building
  - shall be developed as amendments to the local government spatial plan
  - or as a new local plan (if proposed solutions corresponds to the spatial perspective)
- The procedures for amending / changing the existing spatial plans are the same as for the elaboration of spatial plans – decision of the Council, prepared task, public consultation etc

## Who finances the development of spatial plans?

- **Local government** - provide resources for the developing of spatial development planning documents in the budget thereof
- There is a **possibility for private initiative/financing elaboration of local plans and detailed plans**
  - If an initiator of a local plan or detailed plan is not the relevant local government, the developing and implementation thereof shall be financed by the initiator, concluding a contract regarding it with the local government.
  - In such case the local government may participate in co-financing of the local plan or detailed plan in accordance with the procedures laid down in laws and regulations

# Thanks

Gunta Lukstiņa and Jonas Büchel  
University of Latvia, Faculty of *Geography* and Faculty of *Social Sciences*  
*Urban Institute* Association in Riga

Gunta Lukstiņa [gunta.lukstina@lu.lv](mailto:gunta.lukstina@lu.lv)  
Jonas Büchel [balticplanning@gmail.com](mailto:balticplanning@gmail.com)

<http://urbaninstitute.lv>