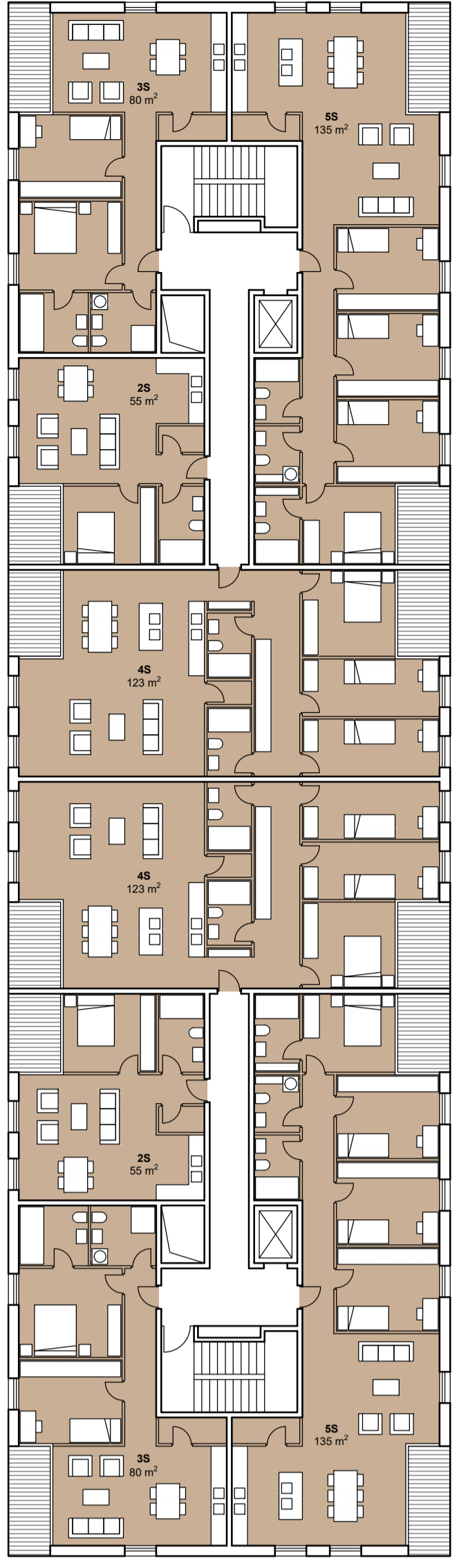


# SREDIŠČE

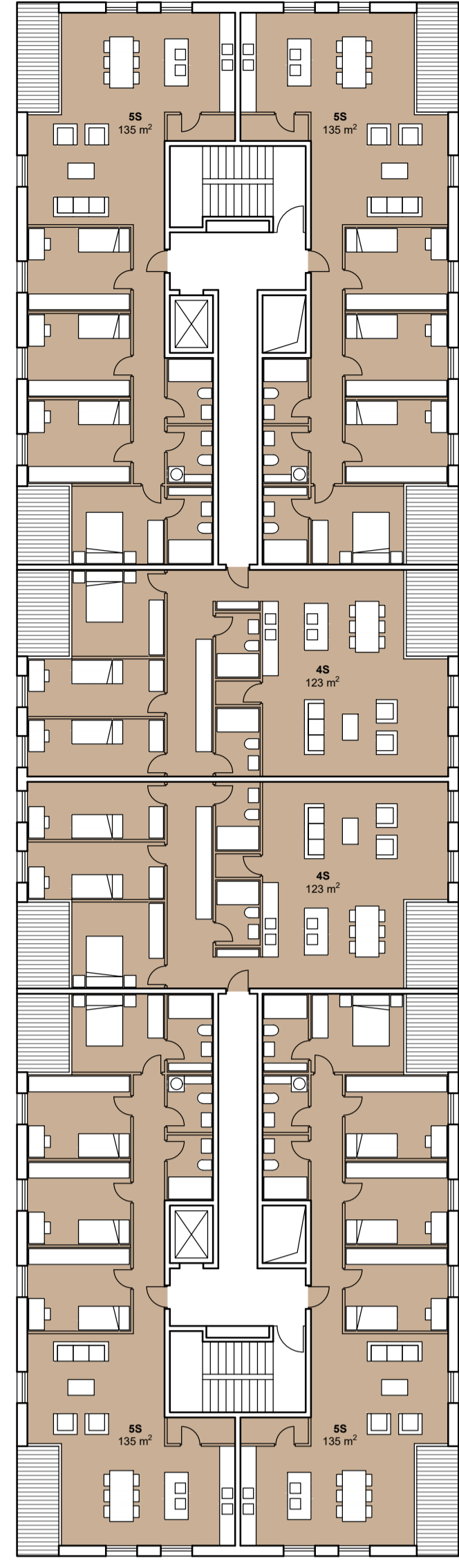
Natječaj za izradu idejnog arhitektonsko-urbanističkog rješenja poslovno-stambene građevine uz Aveniju Većeslava Holjevca

3/4

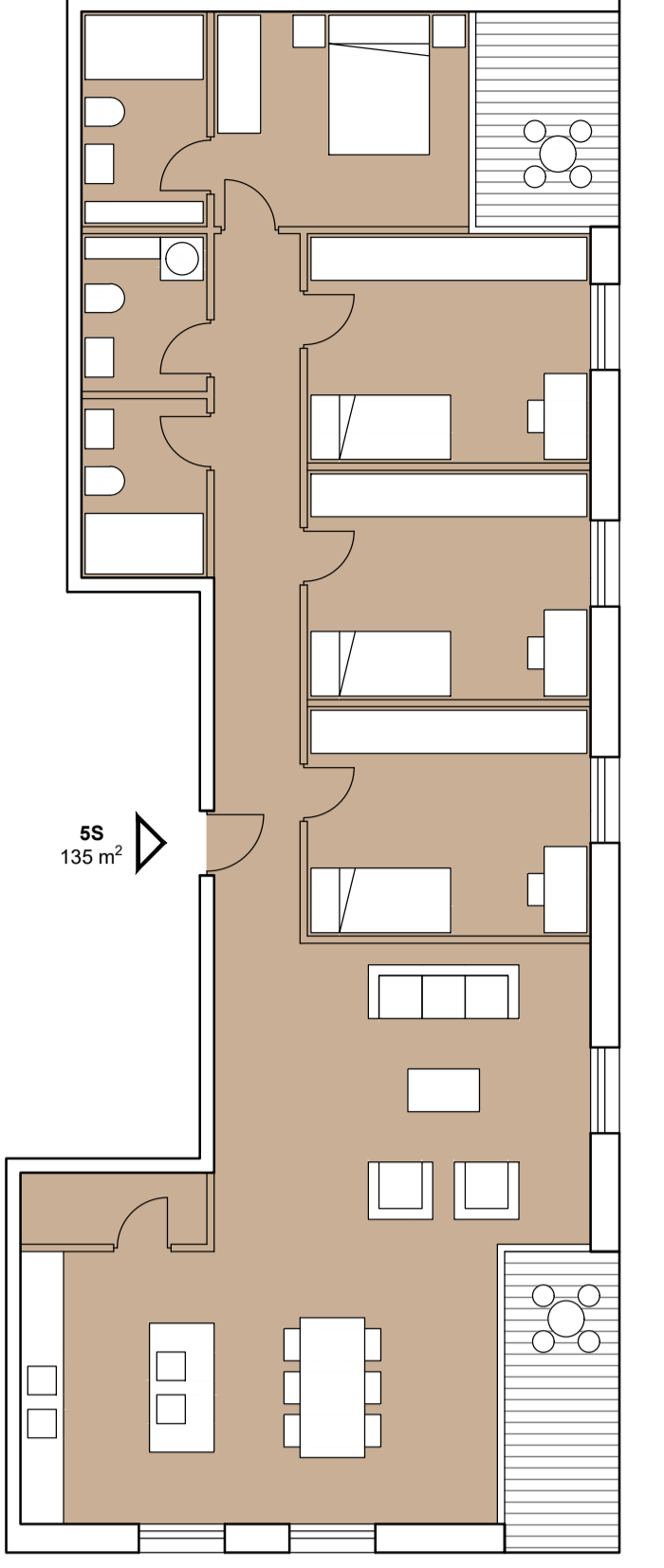
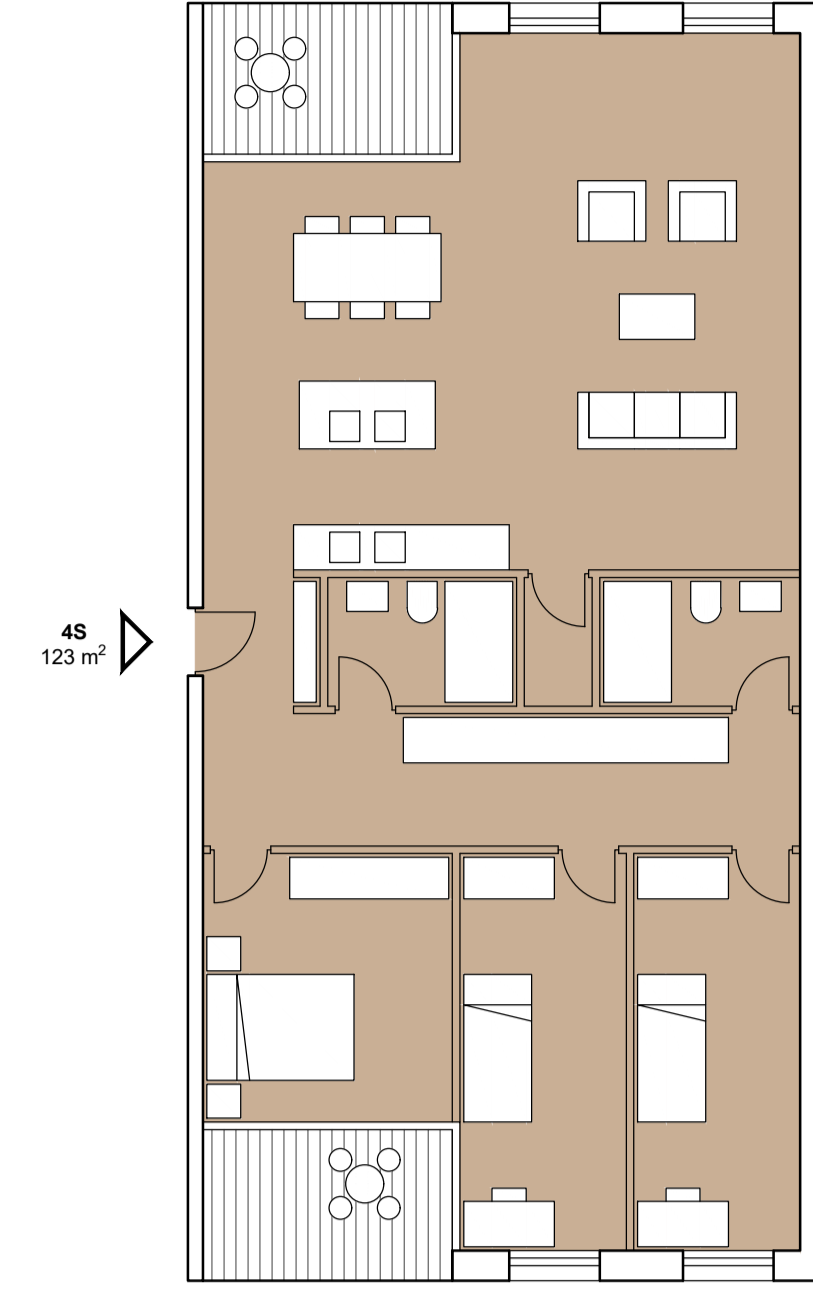
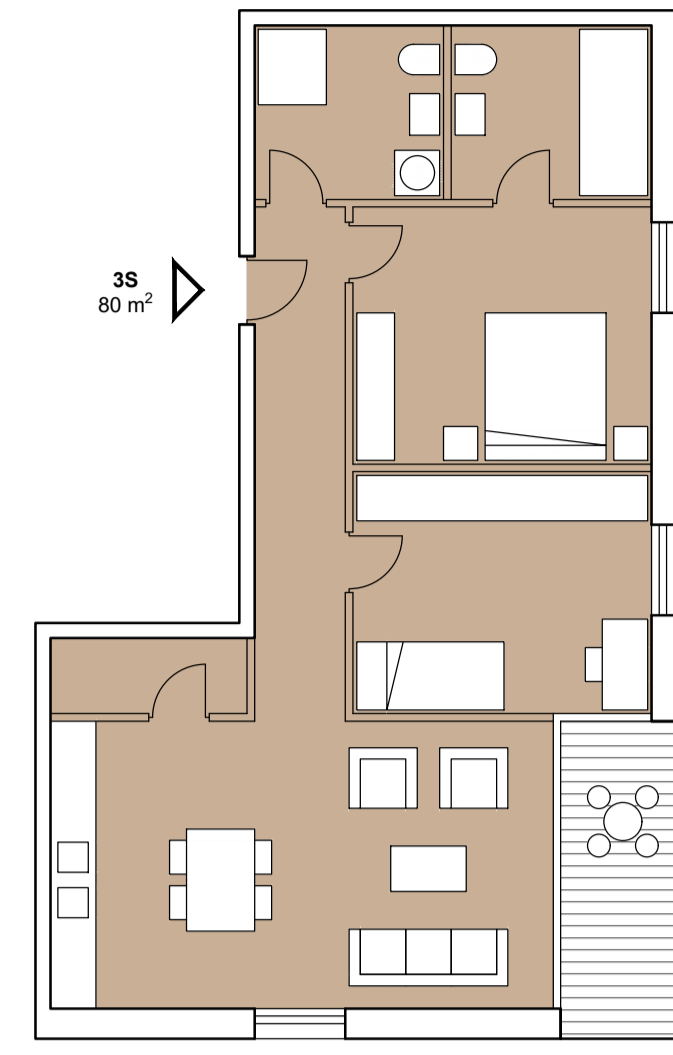
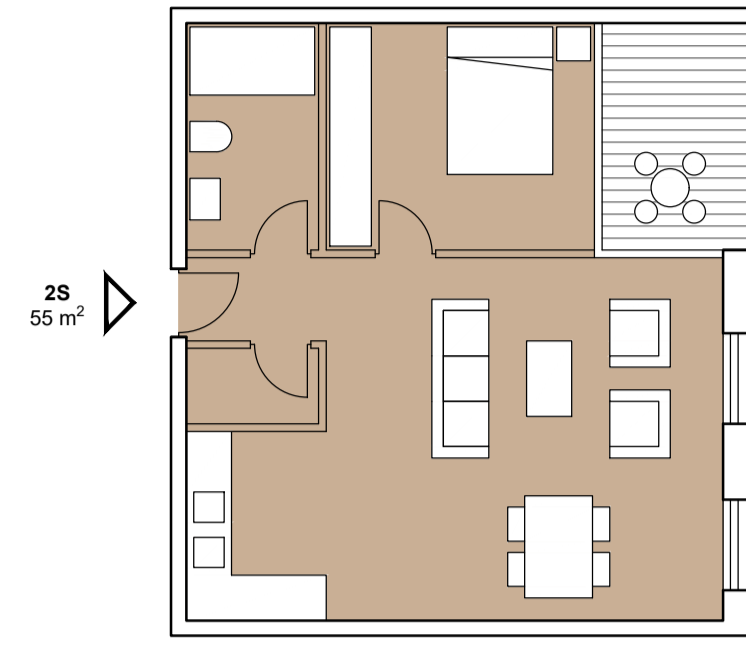
TLOCRT STAMBENE ETAŽE (4.-7. KAT)  
1:200



TLOCRT STAMBENE ETAŽE (8. KAT)  
1:200

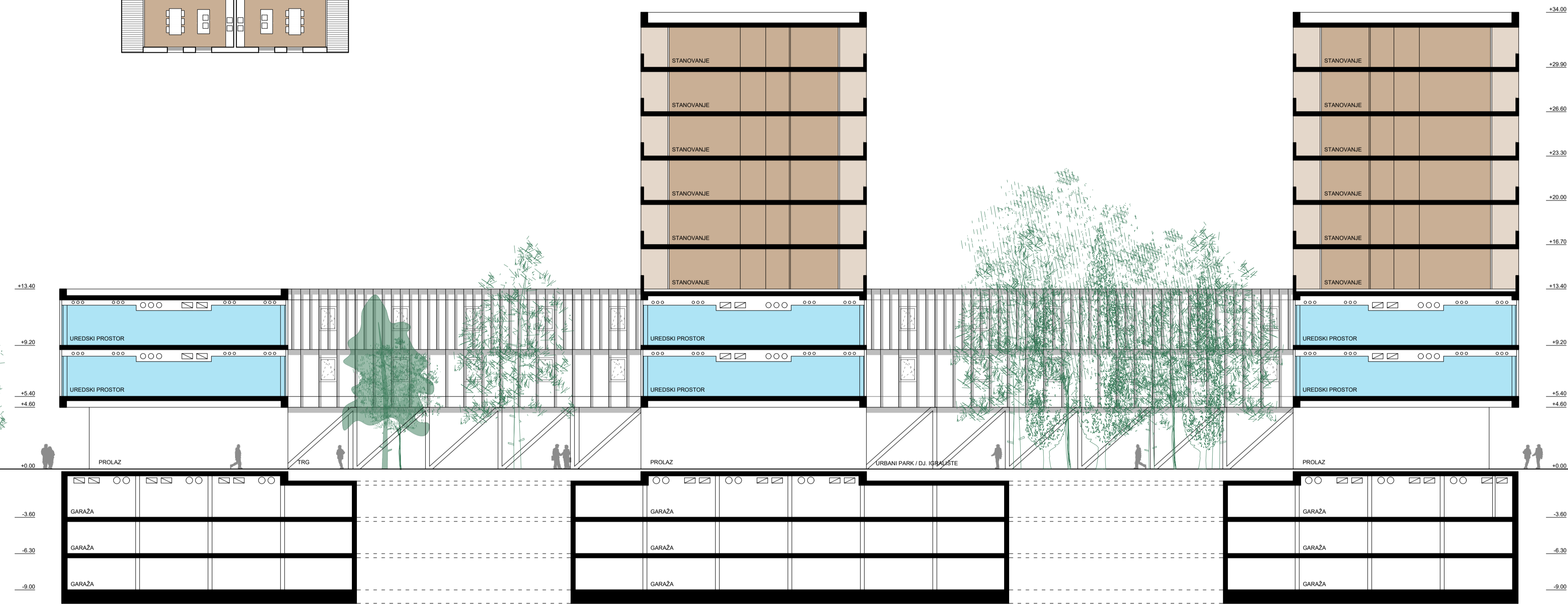


REKAPITULACIJA STANOVA  
2S: 26 (27%)  
3S: 18 (20%)  
4S: 26 (27%)  
5S: 24 (26%)



KATALOG STANOVA  
1:100

PRESJEK 1-1  
1:200



JUŽNO PROČELJE  
1:200

