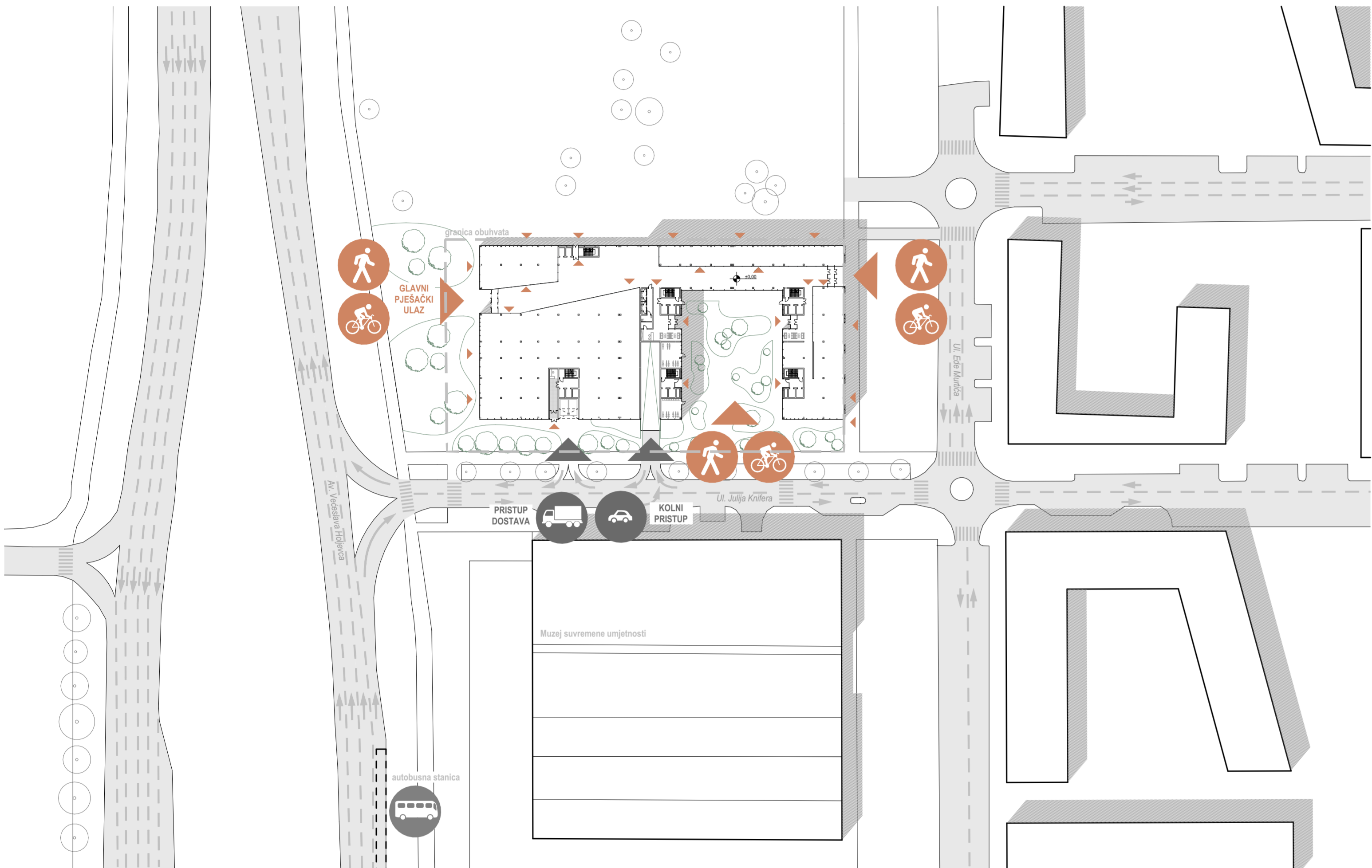
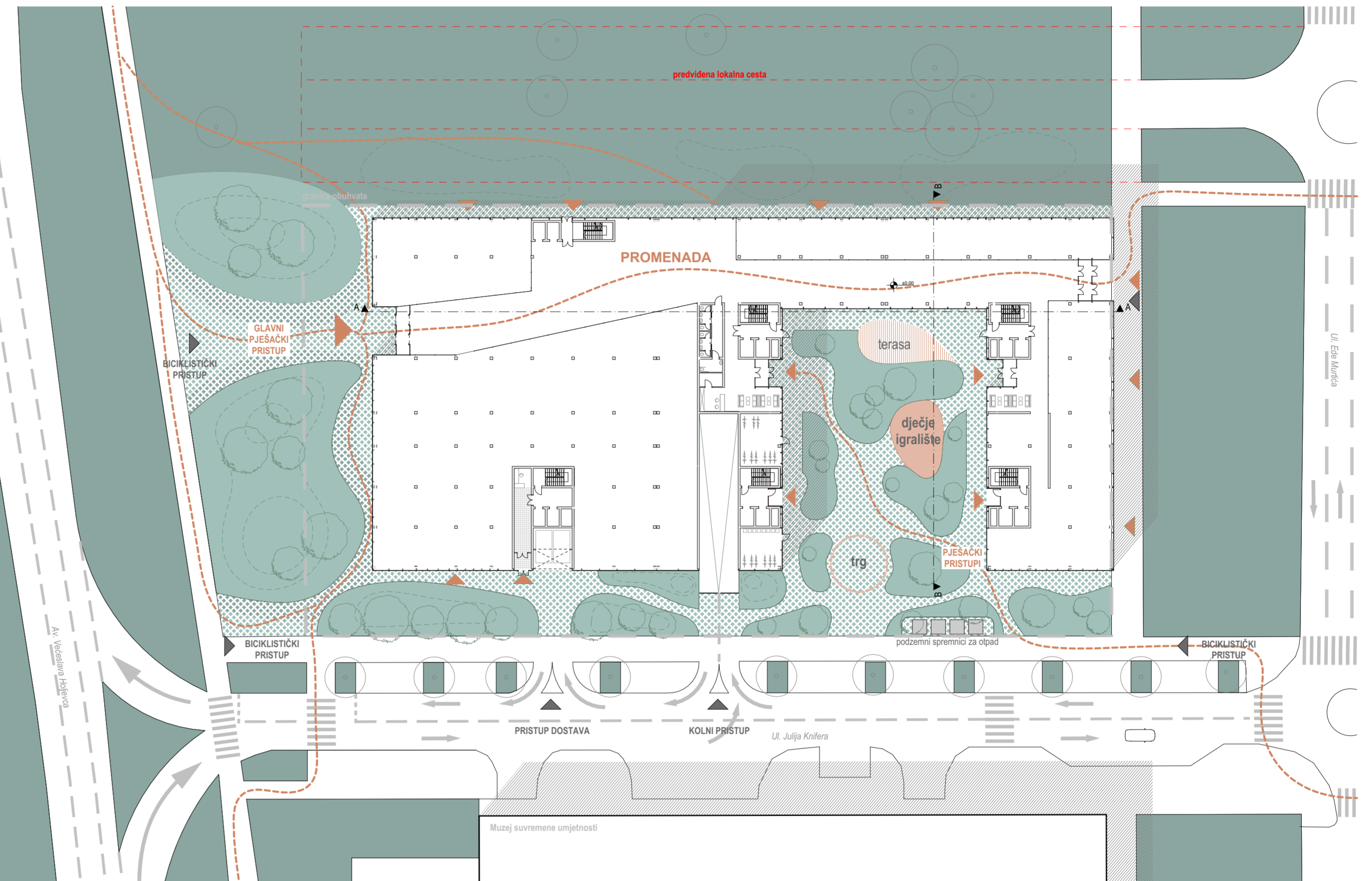




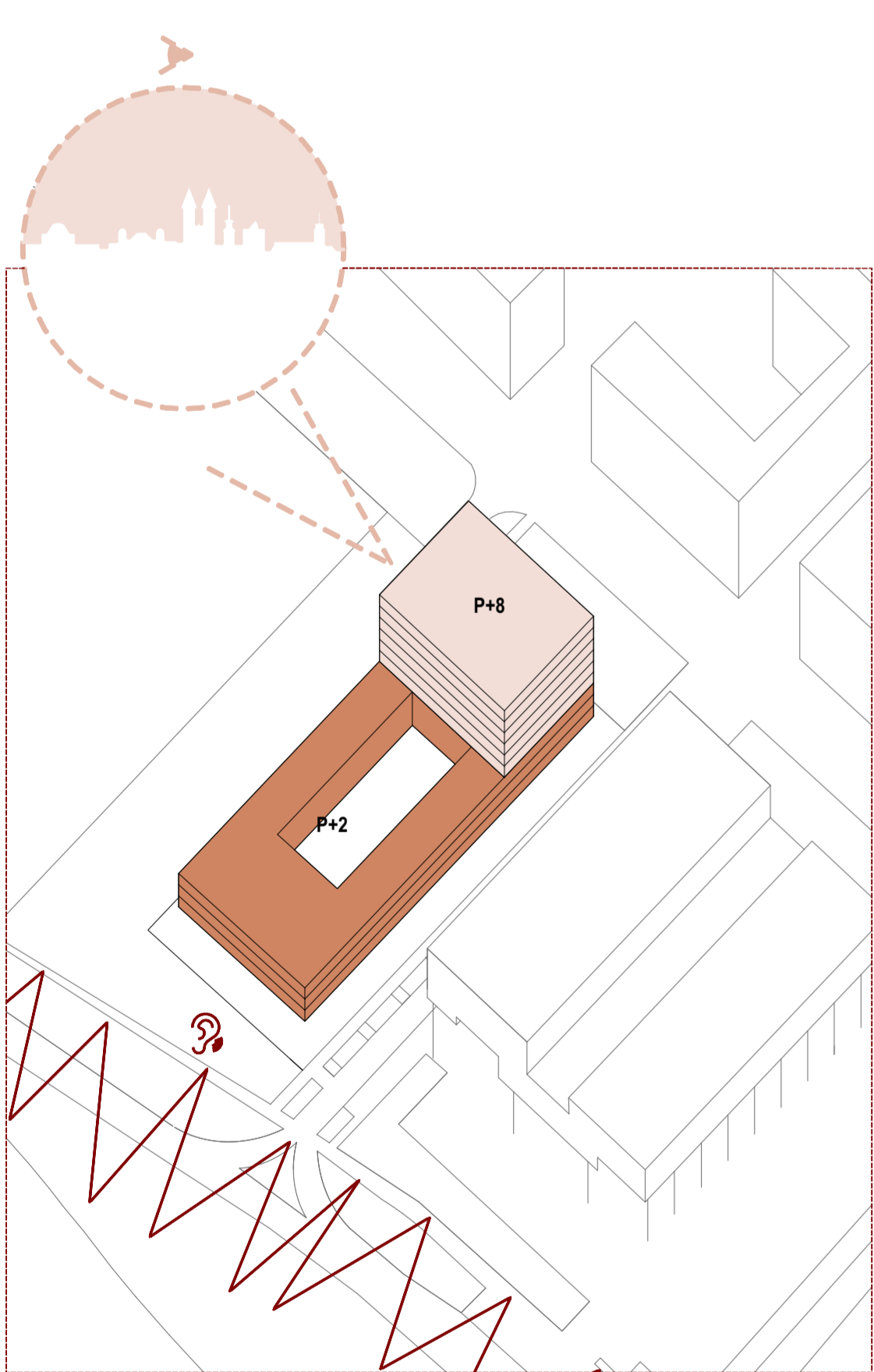
Pogled na jugozapadnu stranu objekta sa Avenije V. Holjevca



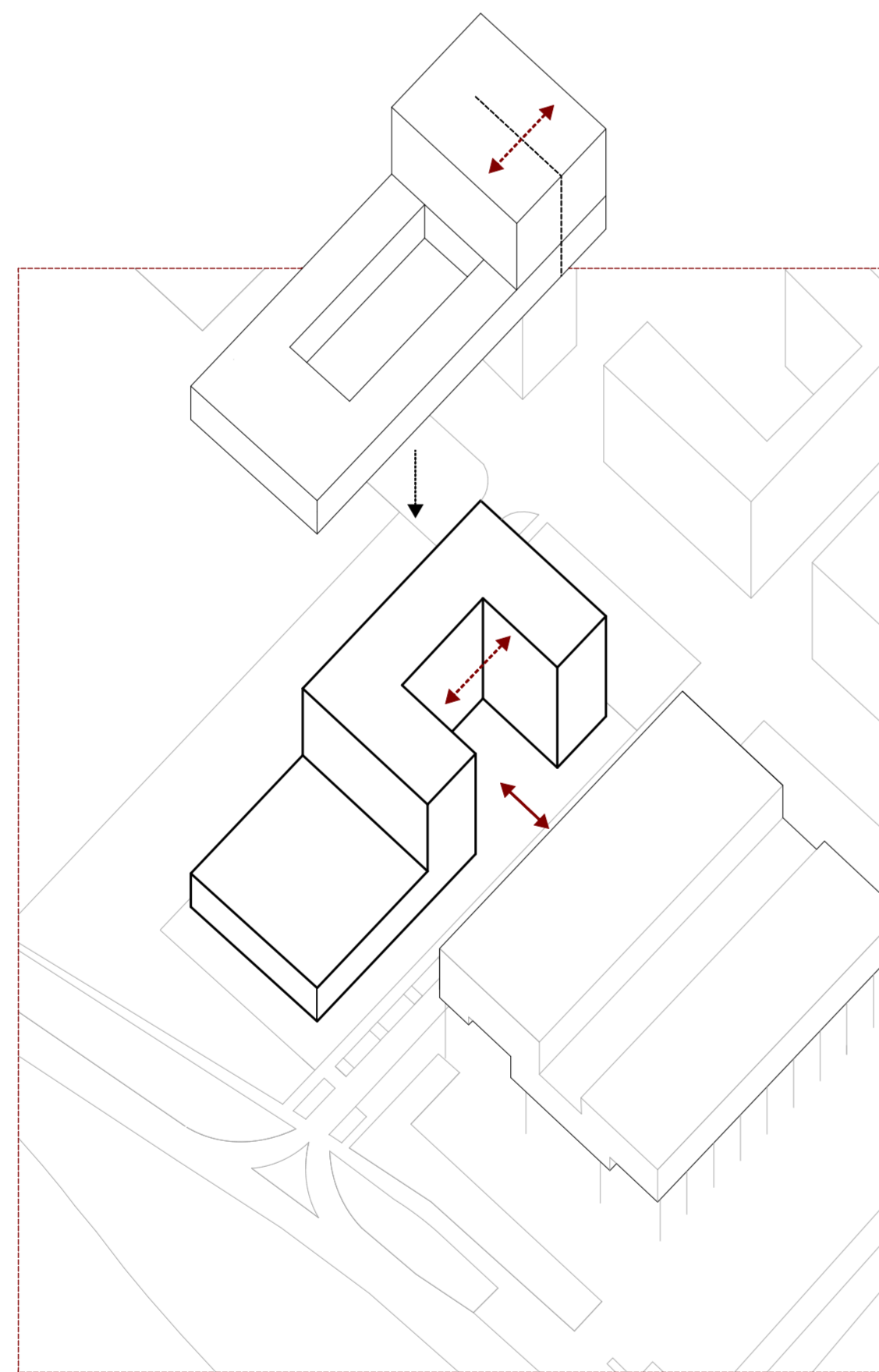
Prostorni prikaz, M 1:1000



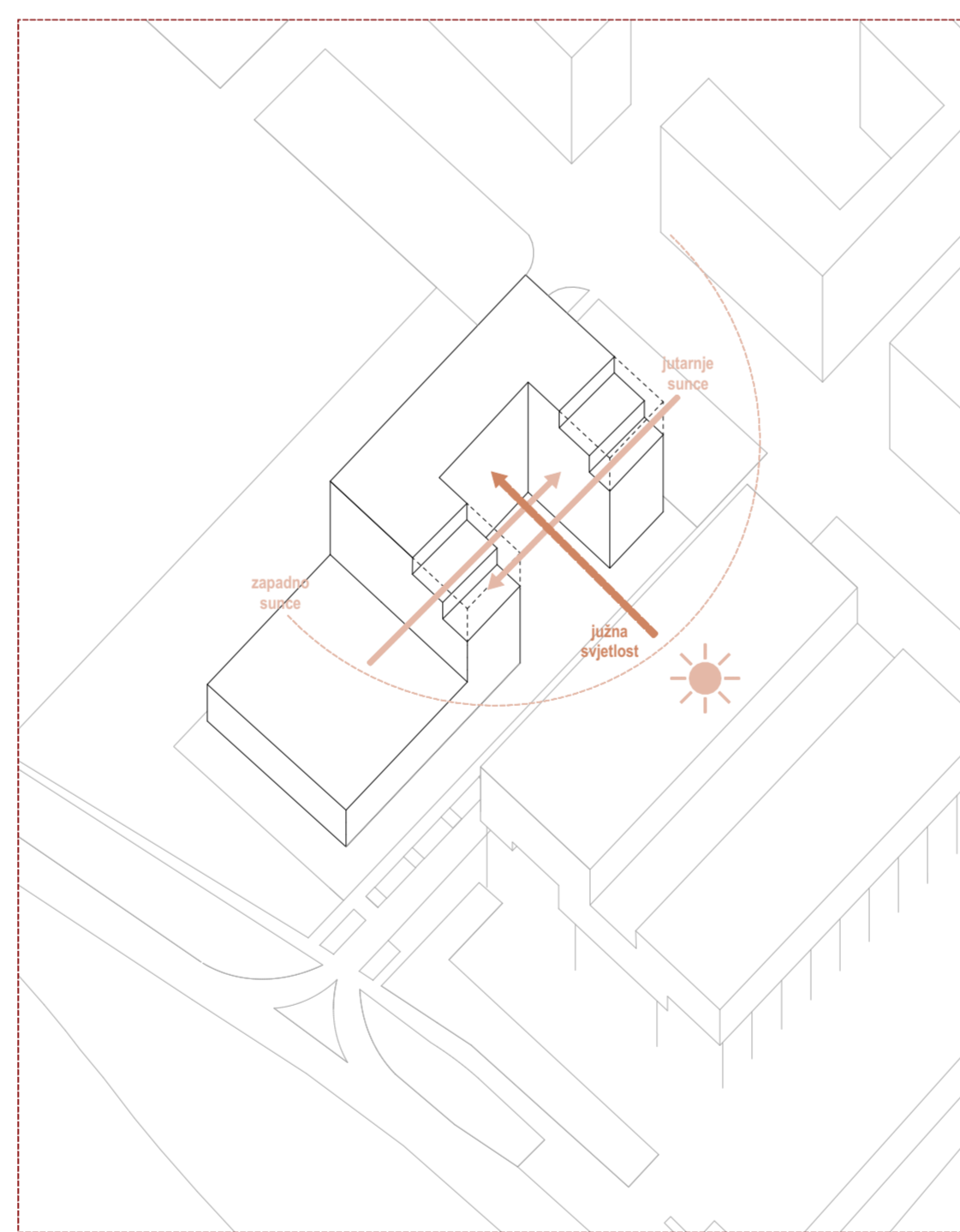
Situacija, M 1:500



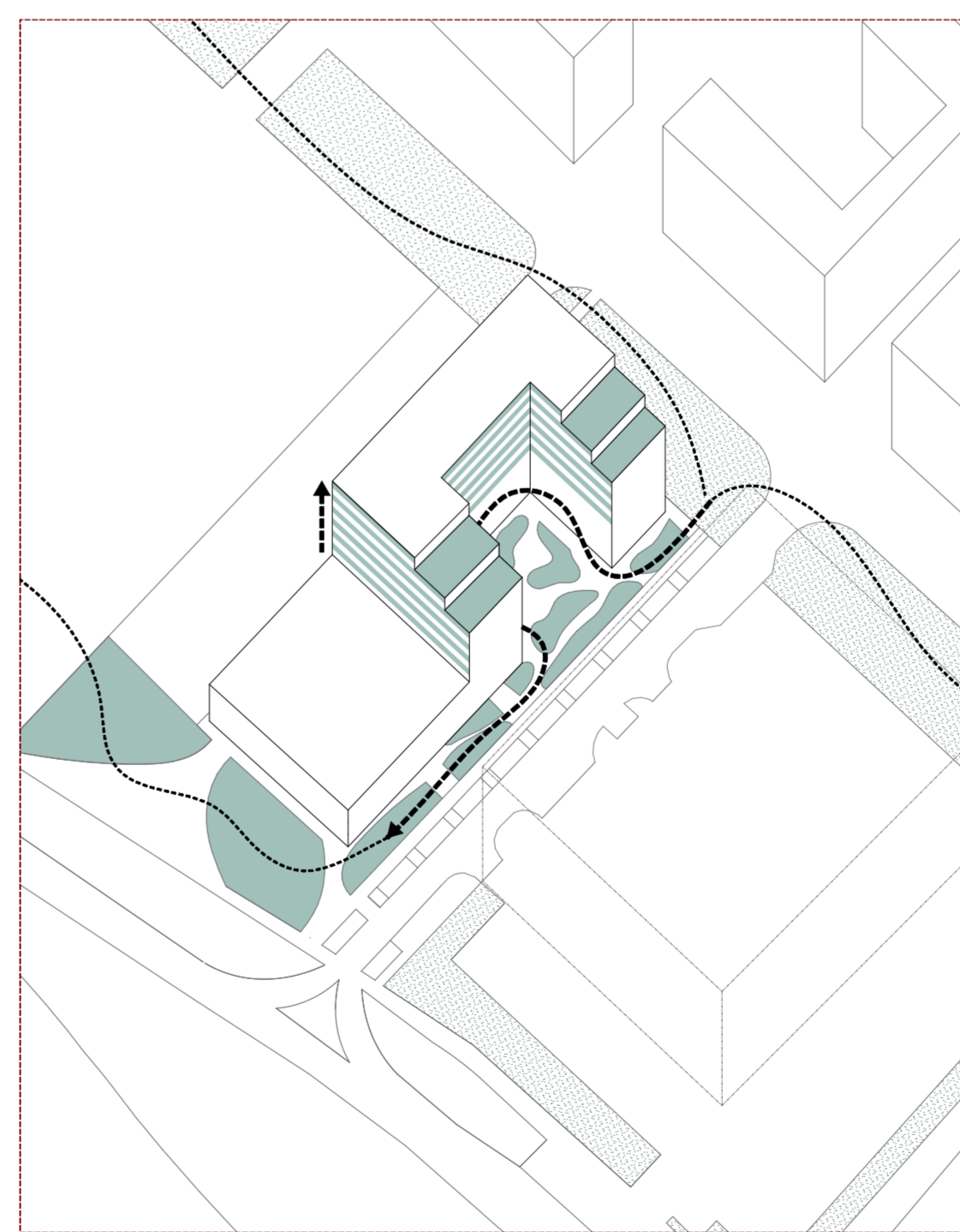
1. Zabeležene karakteristične lokacije.



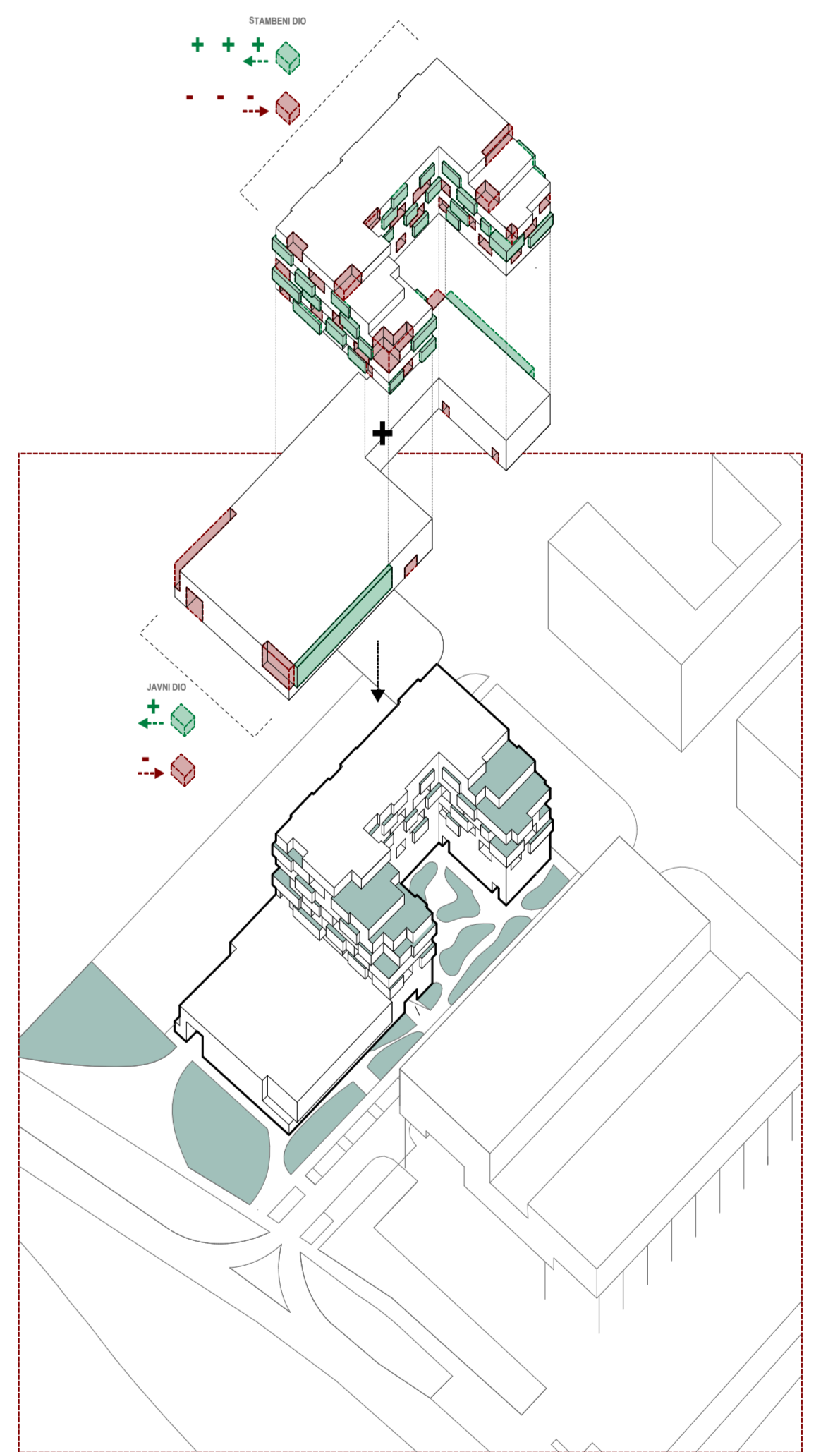
2. Okviranje bloka, stvaranje veze.



3. Mikronapuštanje forme prema optimalnoj orijentaciji.



4. Nastavak i optimiranje postojećih zelenih površina unutar bloka.

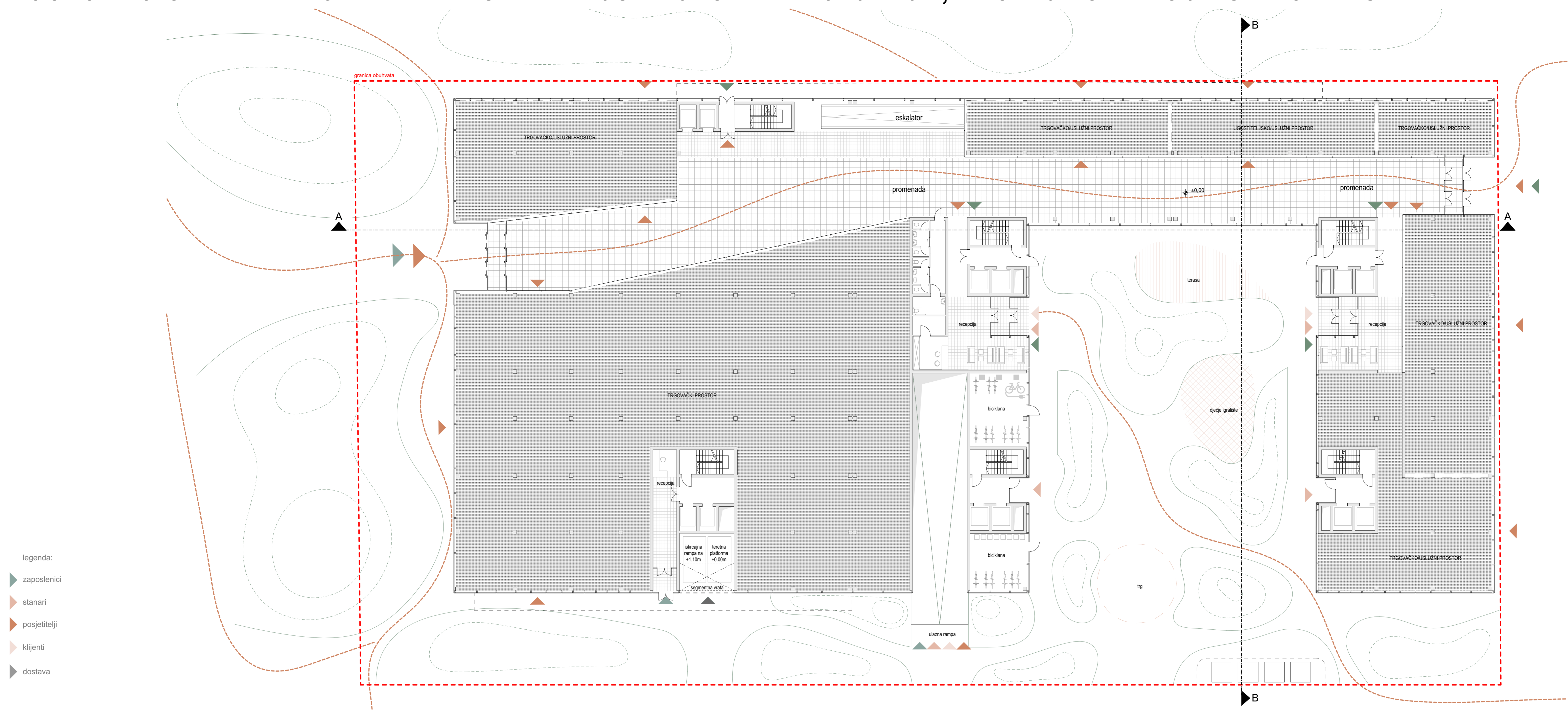


5. Dodajanje i oduzimanje volumena ovisno o programu.

Urbanističko-oblikovni koncept



Sjeverno pročelje, M 1:200

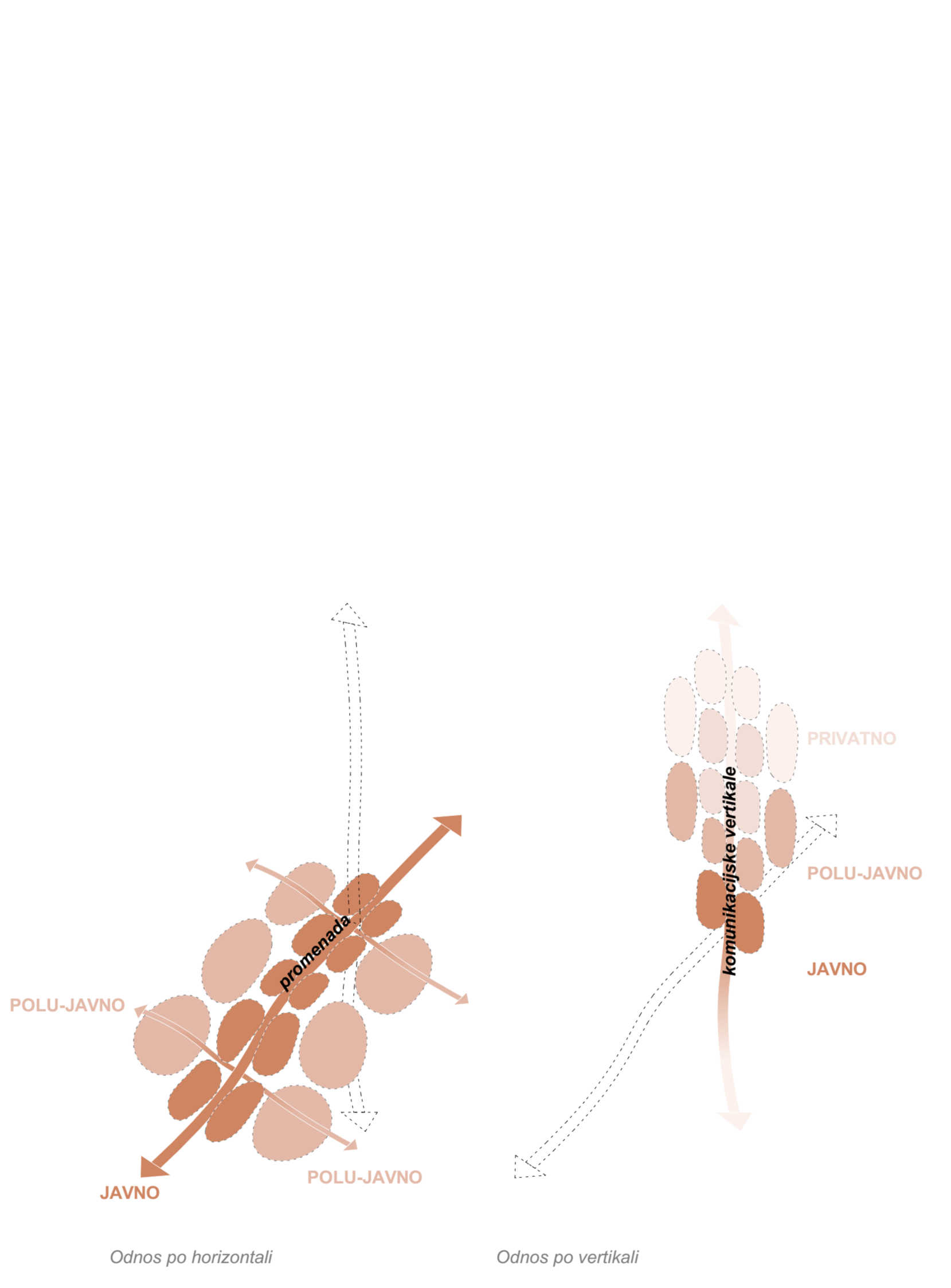


Tlocrt prizemlja, M 1:200

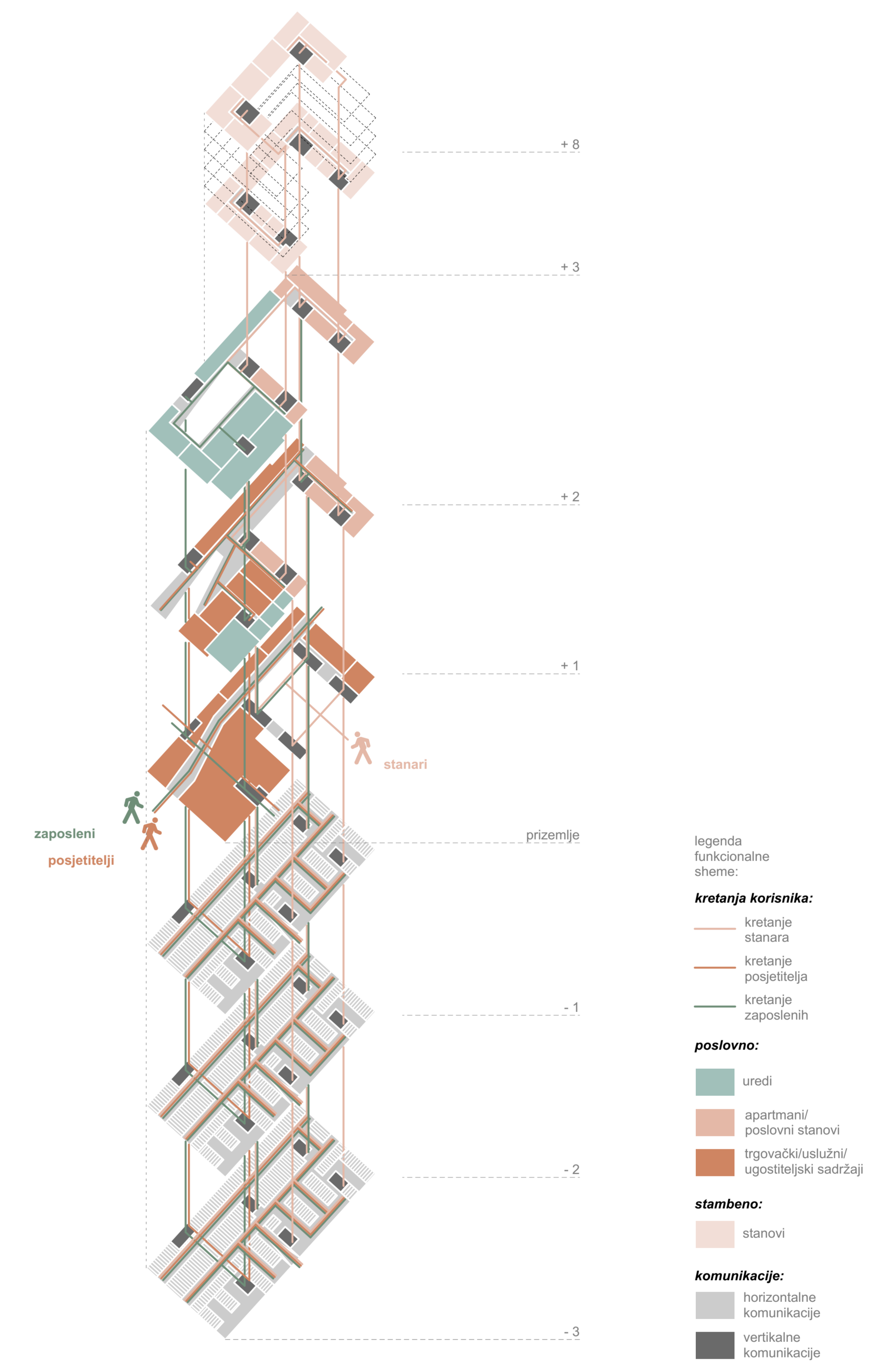
Programska shema:



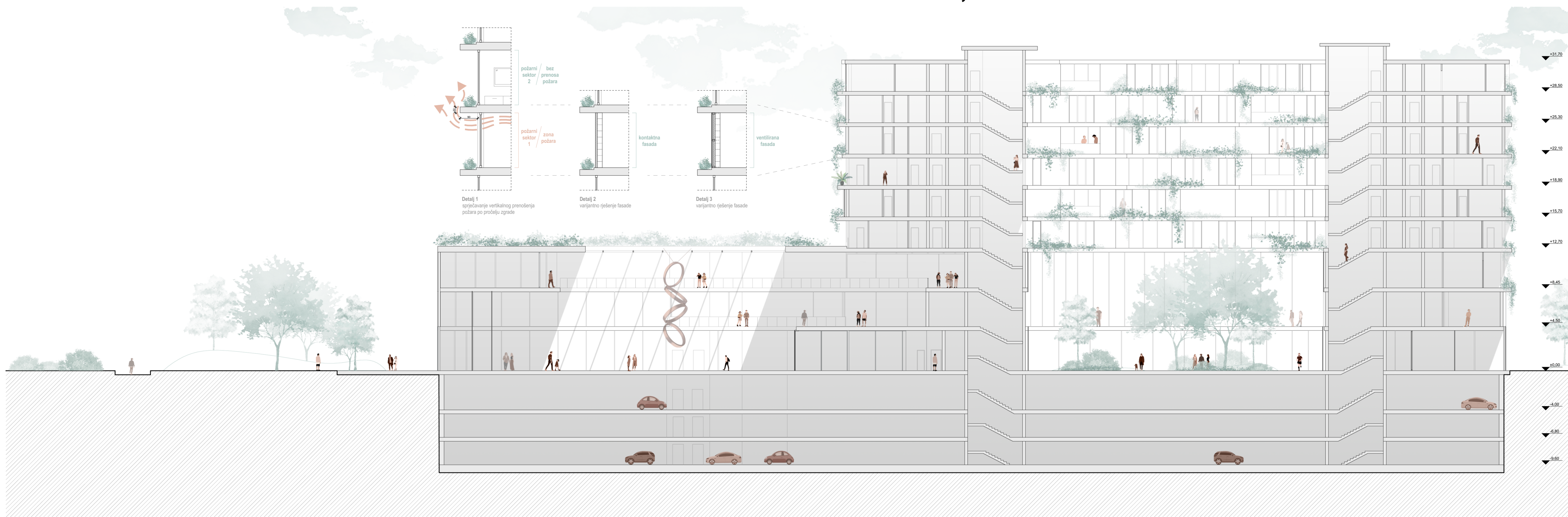
Shema odnosa javnog i privatnog:



Funkcionalna shema:



Pogled na sjeverozapadnu stranu objekta sa Avenije V. Holjevcia



Uzdunni presjek A, M 1:200



Tlocrt -1, kata, M 1:200



Tlocrt -2, kata, M 1:200

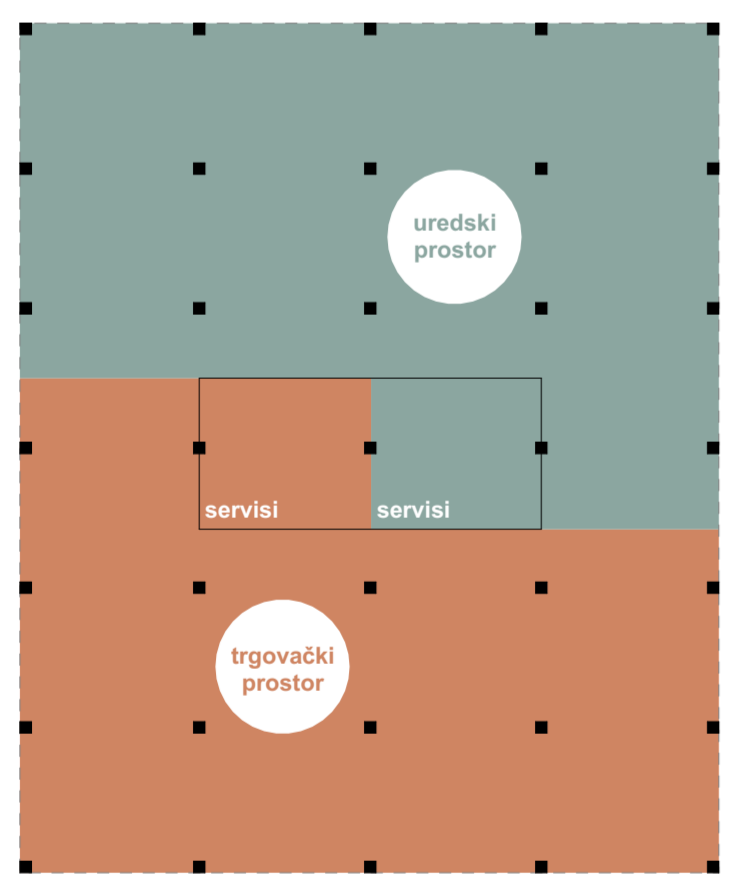
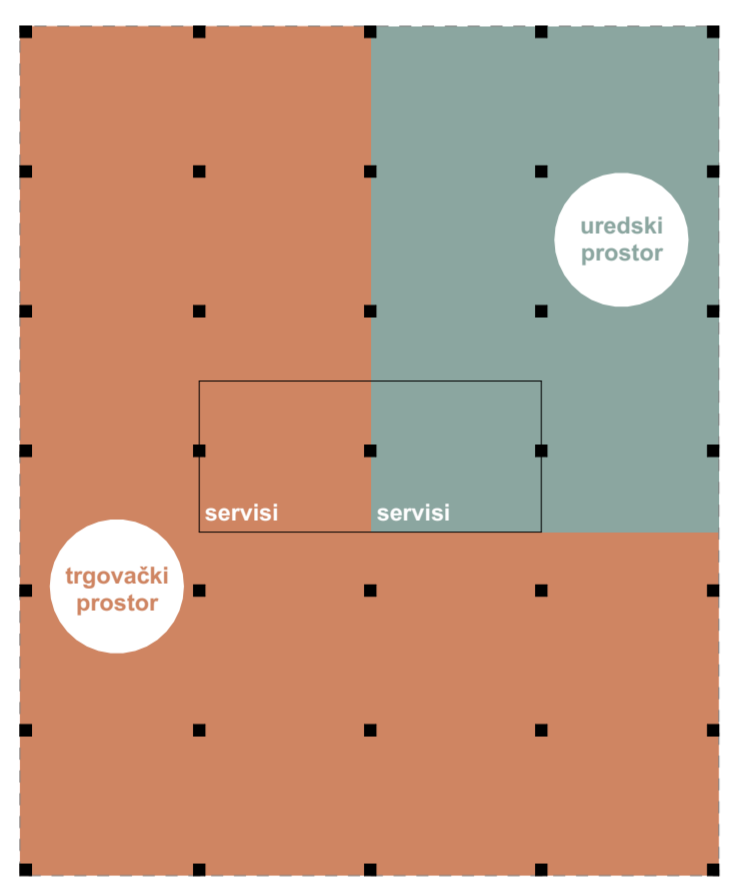
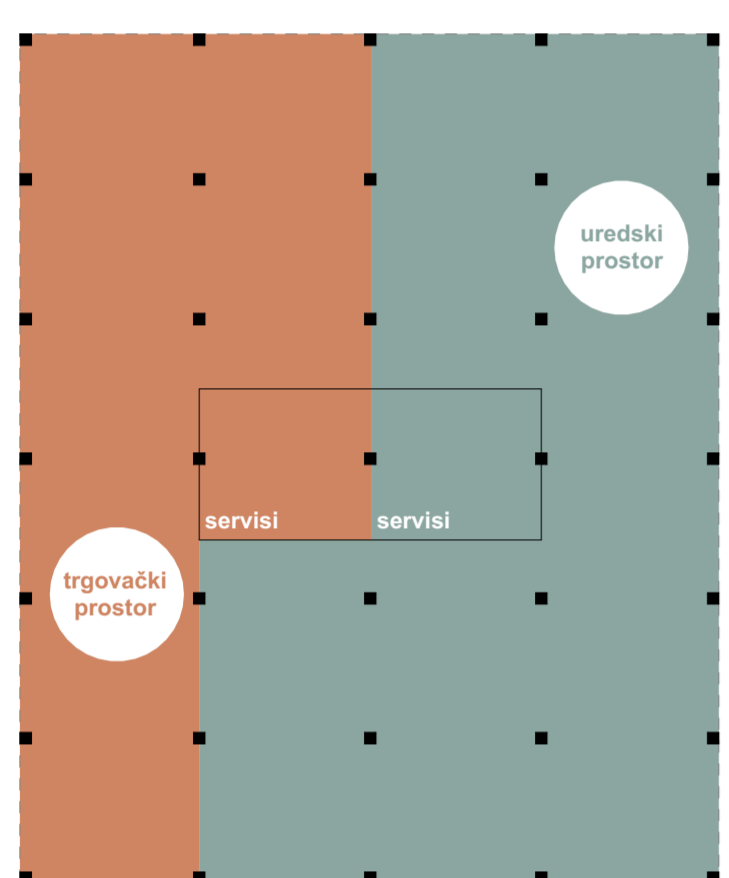
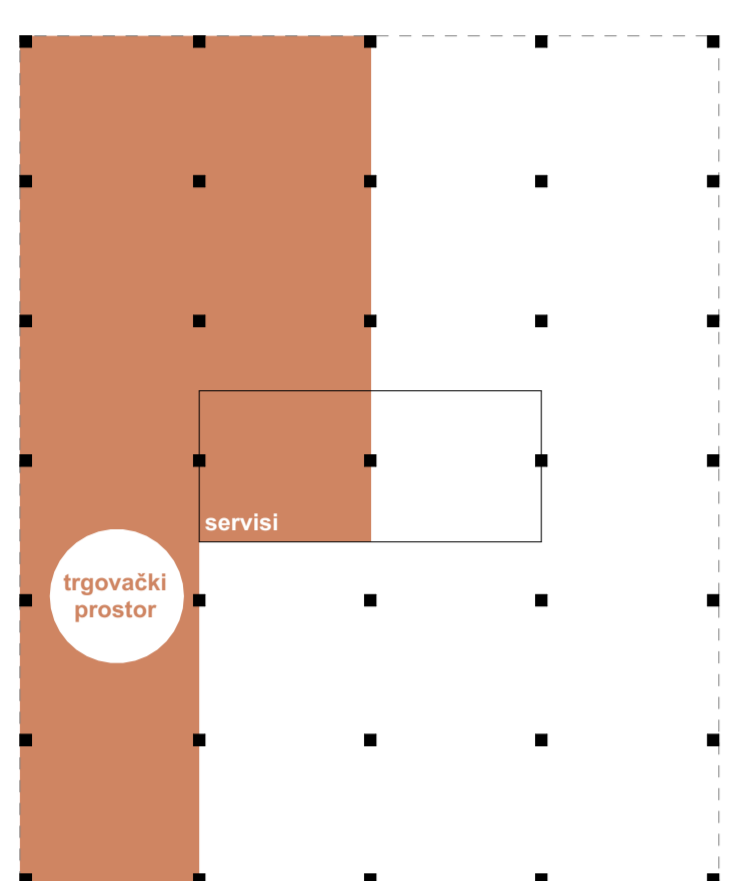


Tlocrt -3, kata, M 1:200

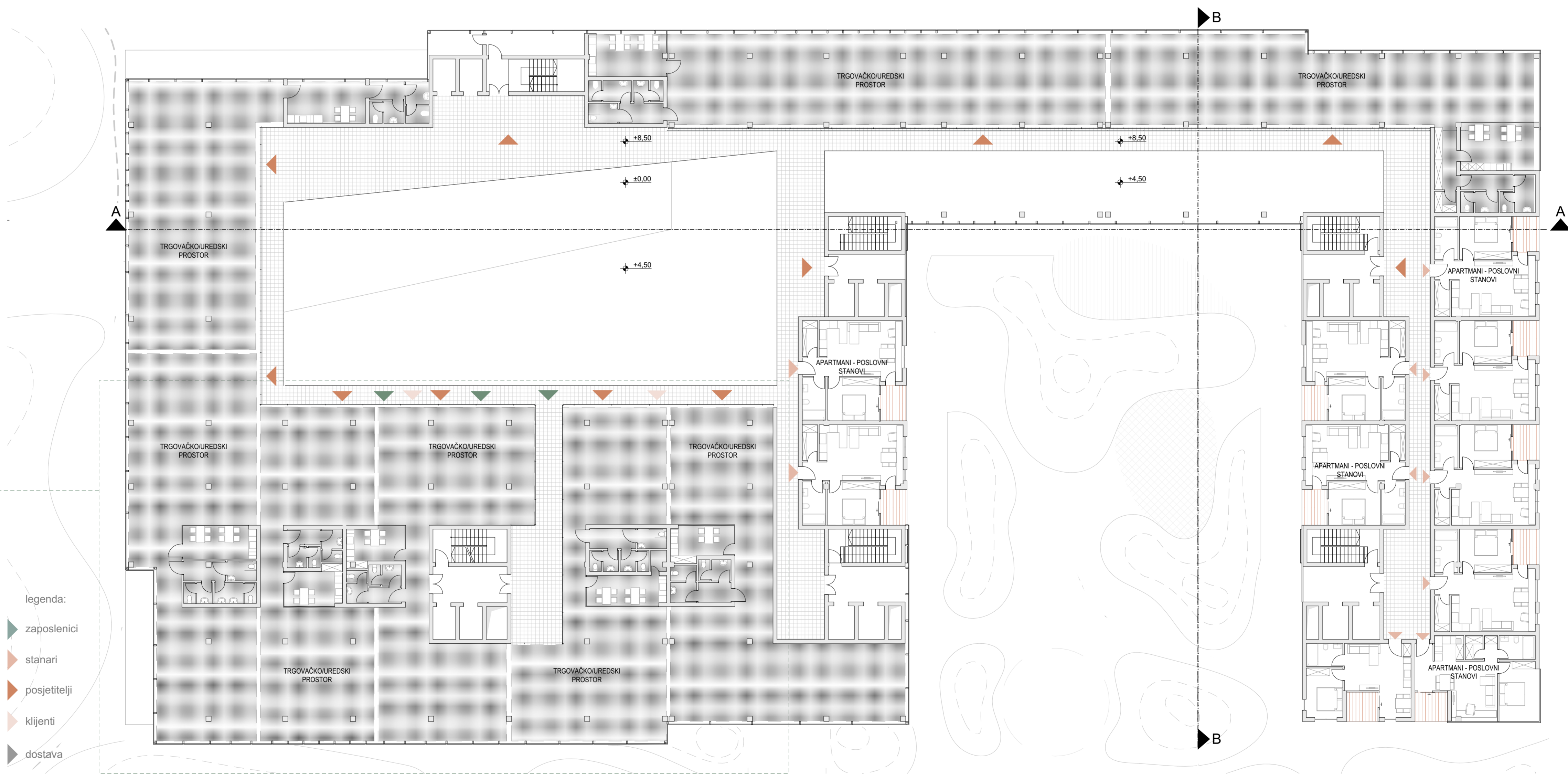


Južno pročelje, M 1:200

Schema fleksibilnosti poslovnog prostora:



Tlocrt +1. kata, M 1:200



Tlocrt +2. kata, M 1:200

- legenda:
- ▲ zaposlenici
 - ▲ stanari
 - ▲ posjetitelji
 - ▲ klijenti
 - ▲ dostava



Pogled iz zraka na objekt, njegovu okolicu i panoramu Zagreba



Pogled na javnu "promenu"



Zapadno pročelje, M 1:200



Istočno pročelje, M 1:200



Tlocrt +3. kata, M 1:200



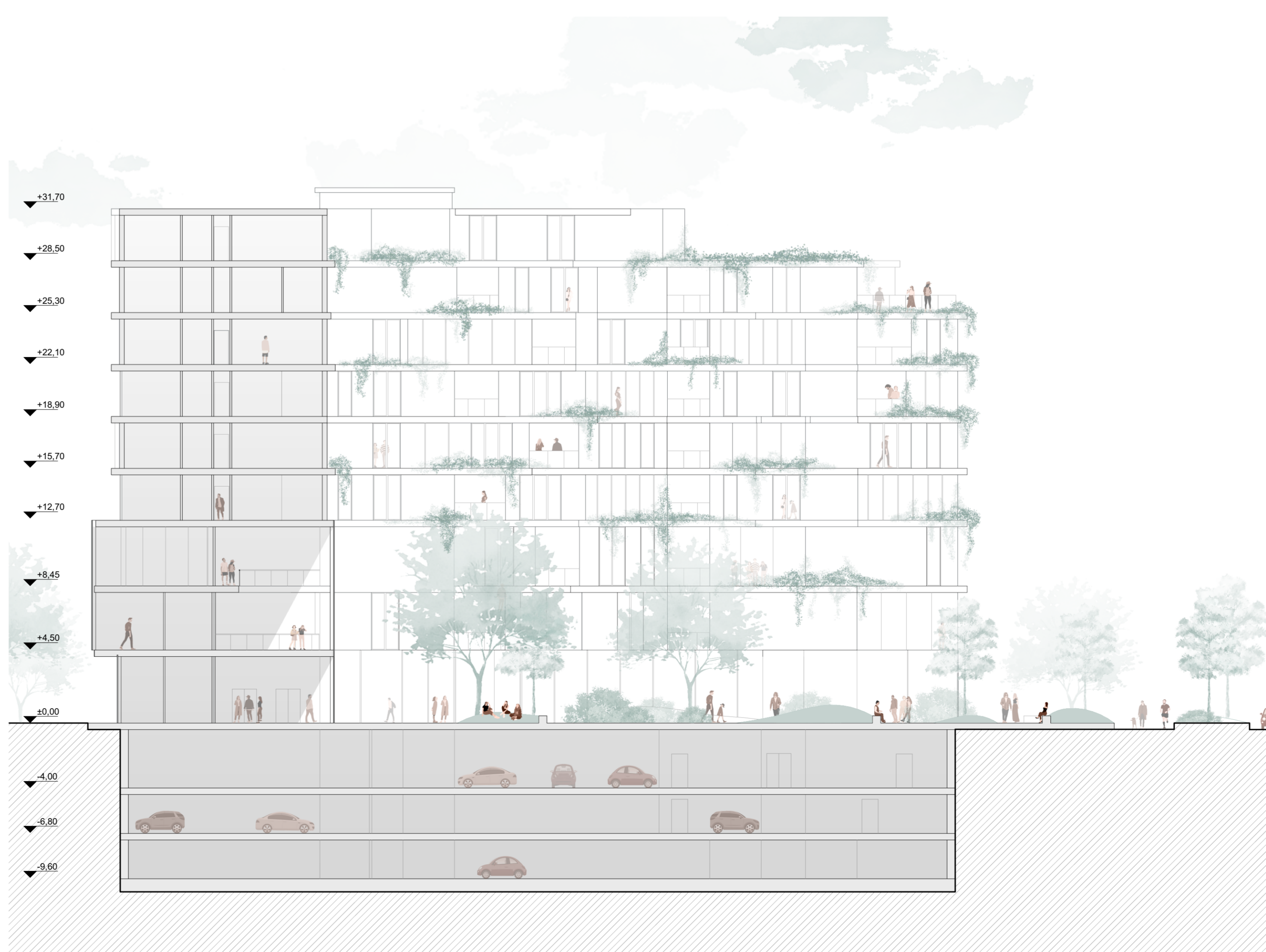
Tlocrt +4. kata, M 1:200



Tlocrt +5. kata, M 1:200



Pogled na terasu peterosobnog stana sa vizurom Donjeg grada



Poprečni presjek B, M 1:200



Tlocrt +6. kata, M 1:200



Tlocrt +7. kata, M 1:200

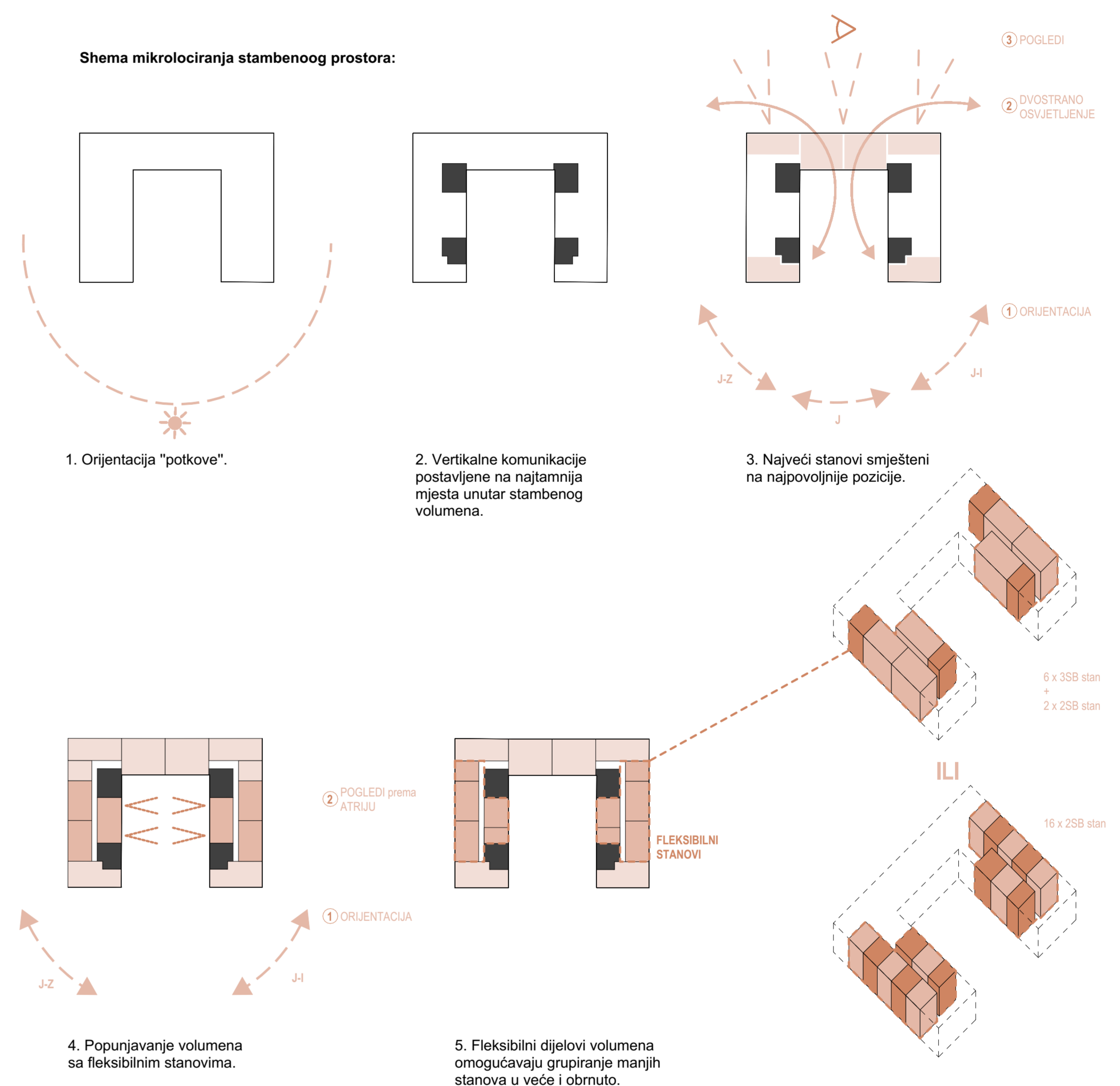


Tlocrt +8. kata, M 1:200

tipologije stanova:

- dvosoban stan (cca. 45 - 60 m²)
- trosoban stan (cca. 65 - 100 m²)
- četverosoban stan (cca. 100 - 130 m²)
- peterosoban stan (+ 130 m²)

Shema mikrolociranja stambenog prostora:



Pogled na vanjski zajednički javni prostor - atrij